

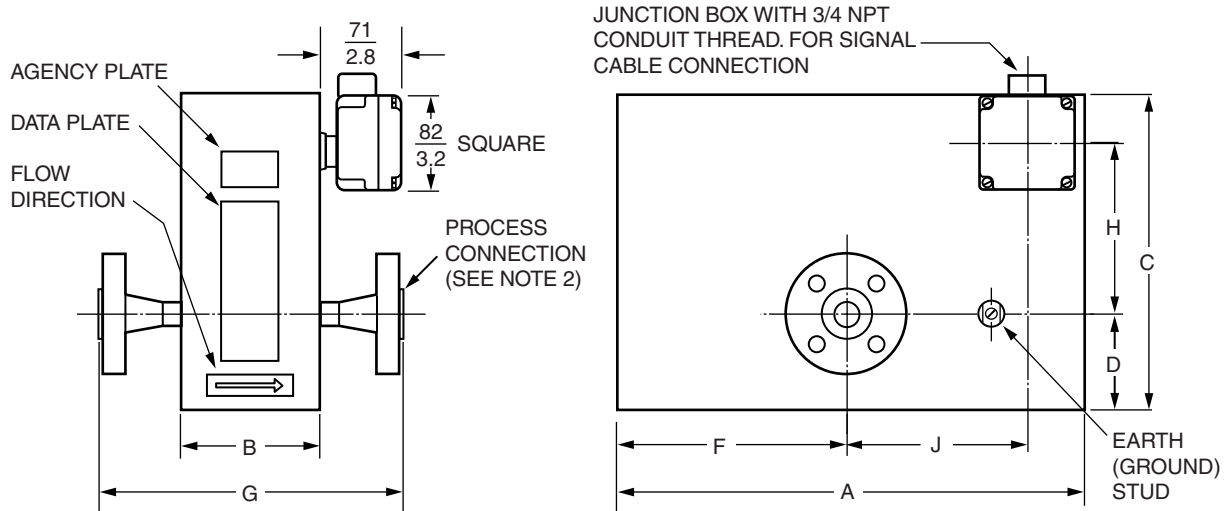
I/A Series[®] Mass Flowmeters

Model CFS10 Mass Flowtubes

6 to 50 mm (1/4 to 2 in) Sizes

Style B

FLANGED END FLOWTUBES



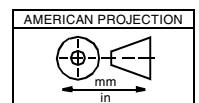
NOTES:

1. SEE NEXT PAGE FOR FLOWTUBE AND FLANGE DIMENSIONAL DATA.
2. SEE PAGE 3 FOR THREADED AND SANITARY END CONNECTIONS.

APPROXIMATE MASS
FLANGED FLOWTUBES

Nominal Line Size		Approximate Mass(a)	
mm	in	kg	lb
6	1/4	9.6	21.0
15	1/2	11.5	25.5
20	3/4	18.5	40.5
25	1	22.5	49.5
40	1 1/2	53.4	118
50	2	77.6	171

(a) With ANSI Class 150 flanges.



For dimensional information specific to your sales order, refer to Certified Dimensional Prints (CDPs) which can be ordered from your Foxboro Sales Office or authorized factory representative.

FLANGED END FLOWTUBES (Cont.)

BOLT HOLE QUANTITY AND BOLT DIAMETER FOR ANSI AND DIN FLANGES

Nominal Flowtube Size	ANSI 150		ANSI 300		ANSI 600		PN 40		PN 100	
	Bolt Holes	Bolt Dia.	Bolt Holes	Bolt Dia.	Bolt Holes	Bolt Dia.	Bolt Holes	Bolt Dia.	Bolt Holes	Bolt Dia.
6 mm(a) (1/4 in)	4	1/2 in	4	1/2 in	4	1/2 in	4	M12	4	M12
15 mm (1/2 in)	4	1/2 in	4	1/2 in	4	1/2 in	4	M12	4	M12
20 mm (3/4 in)	4	1/2 in	4	5/8 in	4	5/8 in	4	M12	4	M16
25 mm (1 in)	4	1/2 in	4	5/8 in	4	5/8 in	4	M12	4	M16
40 mm (1 1/2 in)	4	1/2 in	4	3/4 in	4	3/4 in	4	M12	4	M18
50 mm (2 in)	4	5/8 in	8	5/8 in	8	5/8 in	4	M16	4	M24

(a)Uses 15 mm (1/2 in) flanges.

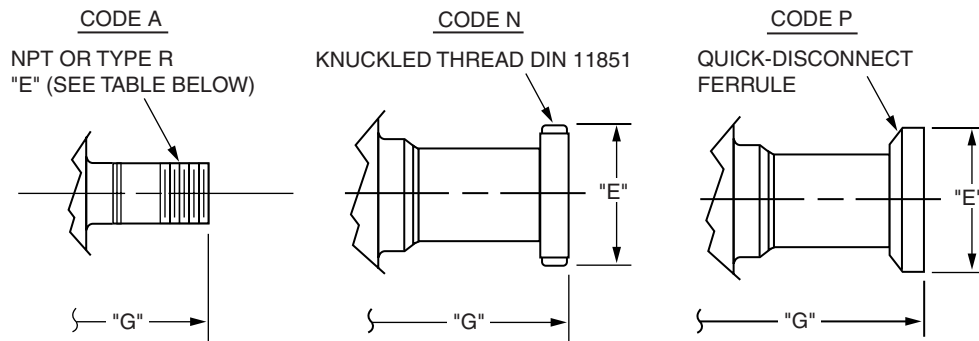
RAISED FACE-TO-RAISED FACE DIMENSIONS FOR ANSI AND DIN FLANGES

Nominal Flowtube Size	Dimension "G" for Flange Type:				
	ANSI Class 150	ANSI Class 300	ANSI Class 600	PN 40	PN 100
6 mm (1/4 in)	<u>265.7</u> 10.46	<u>265.7</u> 10.46	<u>265.7</u> 10.46	<u>265.7</u> 10.46	<u>265.7</u> 10.46
15 mm (1/2 in)	<u>240</u> 9.46	<u>249</u> 9.82	<u>262</u> 10.32	<u>262</u> 10.30	<u>265</u> 10.42
20 mm (3/4 in)	<u>292</u> 11.48	<u>301</u> 11.86	<u>314</u> 12.36	<u>306</u> 12.04	<u>314</u> 12.36
25 mm (1 in)	<u>294</u> 11.56	<u>306</u> 12.06	<u>319</u> 12.56	<u>301</u> 11.86	<u>320</u> 12.58
40 mm (1 1/2 in)	<u>396</u> 15.58	<u>408</u> 16.08	<u>411</u> 16.20	<u>408</u> 16.08	<u>411</u> 16.20
50 mm (2 in)	<u>436</u> 17.16	<u>449</u> 17.66	<u>468</u> 18.42	<u>437</u> 17.22	<u>445</u> 17.52

FLOWTUBE DIMENSIONAL DATA

Nominal Flowtube Size	Other Flowtube Dimensions						
	Dim. "A"	Dim. "B"	Dim. "C"	Dim. "D"	Dim. "F"	Dim. "H"	Dim. "J"
6 mm (1/4 in)	<u>411</u> 16.2	<u>160</u> 6.3	<u>231</u> 9.1	<u>29.5</u> 1.16	<u>206</u> 8.1	<u>149</u> 5.9	<u>155</u> 6.1
15 mm (1/2 in)	<u>417</u> 16.4	<u>122</u> 4.8	<u>277</u> 10.9	<u>84.1</u> 3.31	<u>208</u> 8.2	<u>142</u> 5.6	<u>127</u> 5.0
20 mm (3/4 in)	<u>518</u> 20.4	<u>163</u> 6.4	<u>391</u> 15.4	<u>121.4</u> 4.78	<u>259</u> 10.2	<u>227</u> 8.9	<u>0.0</u> 0.0
25 mm (1 in)	<u>518</u> 20.4	<u>163</u> 6.4	<u>391</u> 15.4	<u>121.4</u> 4.78	<u>259</u> 10.2	<u>227</u> 8.9	<u>0.0</u> 0.0
40 mm (1 1/2 in)	<u>704</u> 27.7	<u>241</u> 9.5	<u>457</u> 18.0	<u>130</u> 5.1	<u>353</u> 13.9	<u>267</u> 10.5	<u>0.0</u> 0.0
50 mm (2 in)	<u>808</u> 31.8	<u>282</u> 11.1	<u>516</u> 20.3	<u>149.9</u> 5.90	<u>404</u> 15.9	<u>298</u> 11.8	<u>0.0</u> 0.0

THREADED AND SANITARY END CONNECTIONS



Nominal Flowtube Size	Dimensions "E" and "G" for the Following End Connection Codes(a)						Approximate Mass	
	Code A		Code N		Code P(b)			
	"G"	"E"	"G"	"E"	"G"	"E"	kg	lb
6 mm (1/4 in)	<u>224</u> 8.8	1/4 NPT	NOT APPLICABLE		<u>274</u> 10.8	<u>24.9</u> 0.98	8.8	19.4
15 mm (1/2 in)	<u>211</u> 8.3	1/2 NPT	<u>284</u> 11.2	<u>52.1</u> 2.05	<u>249</u> 9.8	<u>50.3</u> 1.98	10.4	22.9
20 mm (3/4 in)	<u>259</u> 10.2	3/4 NPT	<u>290.3</u> 11.43	<u>52.1</u> 2.05	<u>290.3</u> 11.43	<u>50.3</u> 1.98	16.7	36.8
25 mm (1 in)	NOT APPLICABLE		<u>320</u> 12.6	<u>52</u> 2.0	<u>287</u> 11.3	<u>50.3</u> 1.98	20.3	44.8
40 mm (1 1/2 in)	NOT APPLICABLE		<u>427</u> 16.8	<u>65</u> 2.56	<u>386</u> 15.2	<u>50.3</u> 1.98	49.9	110
50 mm (2 in)	NOT APPLICABLE		<u>457</u> 18.0	<u>78</u> 3.1	<u>414</u> 16.3	<u>64</u> 2.5	71.2	157

- (a) DIMENSION "G" IS FACE-TO-FACE DISTANCE BETWEEN END CONNECTIONS.
CODE "N" MATES WITH DIN COUPLING W/EXTERNAL THREAD, DIN 11851.
- (b) FLOWTUBE SIZE 1/4-INCH MATES WITH 1/2-INCH QUICK-DISCONNECT FERRULE.
FLOWTUBE SIZES 1/2, 3/4, 1, AND 1 1/2-INCH MATE WITH 1-INCH QUICK-DISCONNECT FERRULE.
FLOWTUBE SIZE 2-INCH MATES WITH 2-INCH QUICK-DISCONNECT FERRULE.

33 Commercial Street
Foxboro, MA 02035-2099
United States of America
www.foxboro.com
Inside U.S.: 1-866-PHON-IPS
(1-866-746-6477)
Outside U.S.: 1-508-549-2424
or contact your local Foxboro
representative.
Facsimile: 1-508-549-4999

Foxboro and I/A Series are registered trademarks of Invensys Systems, Inc.
Invensys is a trademark of Invensys plc.
All other brand names may be trademarks of their respective companies.

Copyright 1997-2002 Invensys Systems, Inc.
All rights reserved

MB 190

Printed in U.S.A

0802