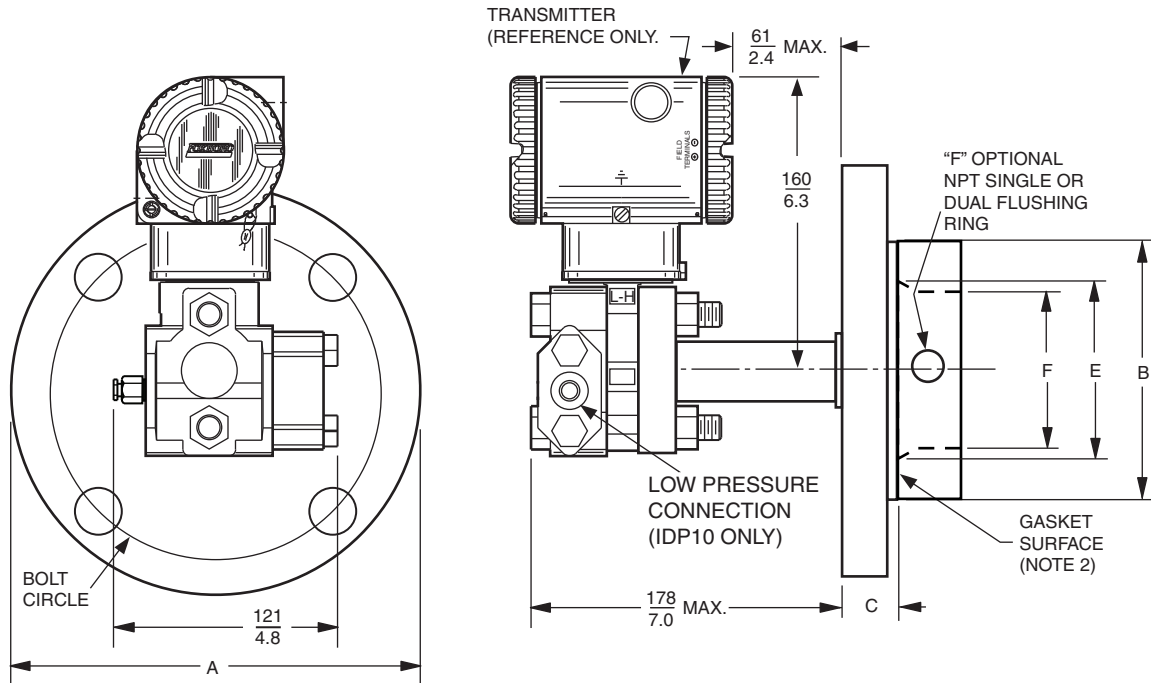


# Transmitter-Mounted Pressure Seals With Flanged Process Connection

Model PSFLT

For use with I/A Series® Pressure Transmitter  
Models IDP10 and IGP20

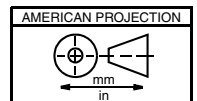
## Flush Seal



### NOTES:

1. FOUR-HOLE FLANGE SHOWN. REFER TO BOLT HOLE CONFIGURATION ON PAGE 4.
2. GASKET SURFACE HAS SERRATED FINISH.
3. FOR TRANSMITTER DIMENSIONS REFER TO TRANSMITTER DIMENSIONAL PRINT.

**See Table on Page 2 for Dimensions A, B, C, E, and F**



For dimensional information specific to your sales order, refer to Certified Dimensional Prints (CDPs) which can be ordered from your Foxboro Sales Office or authorized factory representative.

**Flush Mounted Seals with Carbon or Stainless Steel Flanges (Dimensions A, B, C and E)**

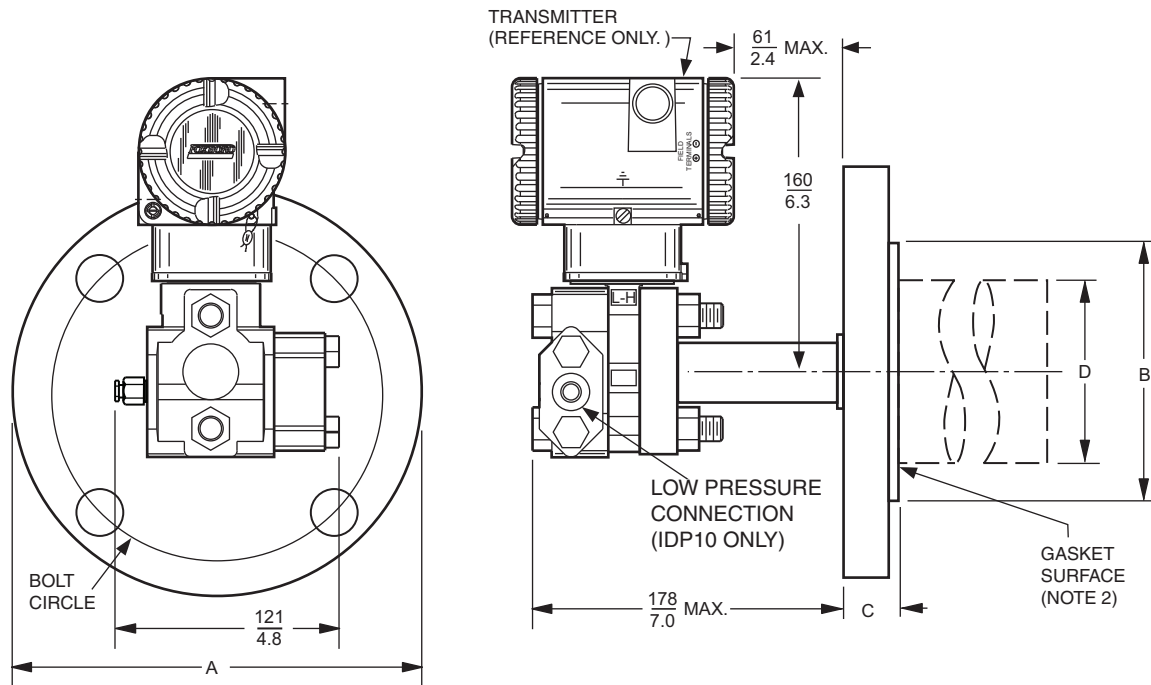
Nominal Flange Size	Flange Pressure Rating	Dimensional Data							
		Number of Bolt Holes	Bolt Hole Dia.	Bolt Circle Dia.	Dim. A	Dim. B(c)	Dim. C		Dim. E(d)
							CS(a)	SS(b)	
2 in (50 mm)	Class 150	4	<u>19</u> 0.75	<u>121</u> 4.75	<u>152</u> 6.0	<u>92</u> 3.62	<u>24</u> 0.9	<u>19</u> 0.8	<u>58.4</u> 2.3
	Class 300	8	<u>19</u> 0.75	<u>127</u> 5.00	<u>165</u> 6.5	<u>92</u> 3.62	<u>27</u> 1.1	<u>22</u> 0.9	<u>58.4</u> 2.3
	Class 600	8	<u>19</u> 0.75	<u>127</u> 5.00	<u>165</u> 6.5	<u>92</u> 3.62	<u>32</u> 1.2	<u>32</u> 1.2	<u>58.4</u> 2.3
3 in (80 mm)	Class 150	4	<u>19</u> 0.75	<u>152</u> 6.00	<u>191</u> 7.5	<u>127</u> 5.00	<u>29</u> 1.1	<u>24</u> 0.9	<u>88.9</u> 3.5
	Class 300	8	<u>22</u> 0.88	<u>168</u> 6.62	<u>211</u> 8.3	<u>127</u> 5.00	<u>33</u> 1.3	<u>28</u> 1.1	<u>88.9</u> 3.5
	Class 600	8	<u>22</u> 0.88	<u>168</u> 6.62	<u>211</u> 8.3	<u>127</u> 5.00	<u>38</u> 1.5	<u>38</u> 1.5	<u>88.9</u> 3.5
DN50 (50 mm)	PN 10/40	4	<u>18</u> 0.71	<u>125</u> 4.92	<u>165</u> 6.5	<u>102</u> 4.02	<u>23</u> 0.9	<u>20</u> 0.8	<u>58.4</u> 2.3
DN80 (80 mm)	PN 10/40	8	<u>18</u> 0.71	<u>160</u> 6.30	<u>200</u> 7.9	<u>138</u> 5.43	<u>27</u> 1.1	<u>24</u> 0.9	<u>88.9</u> 3.5

- (a) Dimensions for Carbon Steel Flanges
- (b) Dimensions for Stainless Steel Flanges
- (c) OD of Raised Face (Gasket Surface)
- (d) Maximum Diameter of Diaphragm on Flush Mount Seal

**Flushing Ring (Dimension F)**

Raised Face Flange	Material	NPT Flushing Connections	Dim. F (Flushing Ring)		
			I.D.	O.D.	Height
2 in (50 mm)	316 ss	1/4 NPT	<u>53.8</u>	<u>92</u>	<u>25</u>
	Hastelloy C	1/4 NPT	2.12	3.62	1.00
	316 ss	1/2 NPT	<u>53.8</u>	<u>92</u>	<u>38.1</u>
	Hastelloy C	1/2 NPT	2.12	3.62	1.50
	316 ss	1/4 NPT (Dual)	<u>53.8</u>	<u>92</u>	<u>25</u>
	Hastelloy C	1/4 NPT (Dual)	2.12	3.62	1.00
	316 ss	1/2 NPT (Dual)	<u>53.8</u>	<u>92</u>	<u>38.1</u>
3 in (80 mm)	Hastelloy C	1/2 NPT (Dual)	2.12	3.62	1.50
	316 ss	1/4 NPT	<u>76.2</u>	<u>127</u>	<u>25</u>
	Hastelloy C	1/4 NPT	3.0	5.0	1.00
	316 ss	1/2 NPT	<u>76.2</u>	<u>127</u>	<u>38.1</u>
	Hastelloy C	1/2 NPT	3.0	5.0	1.50
	316 ss	1/4 NPT (Dual)	<u>76.2</u>	<u>127</u>	<u>25</u>
	Hastelloy C	1/4 NPT (Dual)	3.0	5.0	1.00
316 ss	1/2 NPT (Dual)	<u>76.2</u>	<u>127</u>	<u>38.1</u>	
Hastelloy C	1/2 NPT (Dual)	3.0	5.0	1.50	

**Extended Seal**



**NOTES:**

1. FOUR-HOLE FLANGE SHOWN. REFER TO BOLT HOLE CONFIGURATION ON PAGE 4.
2. GASKET SURFACE HAS SERRATED FINISH.
3. FOR TRANSMITTER DIMENSIONS REFER TO TRANSMITTER DIMENSIONAL PRINT.

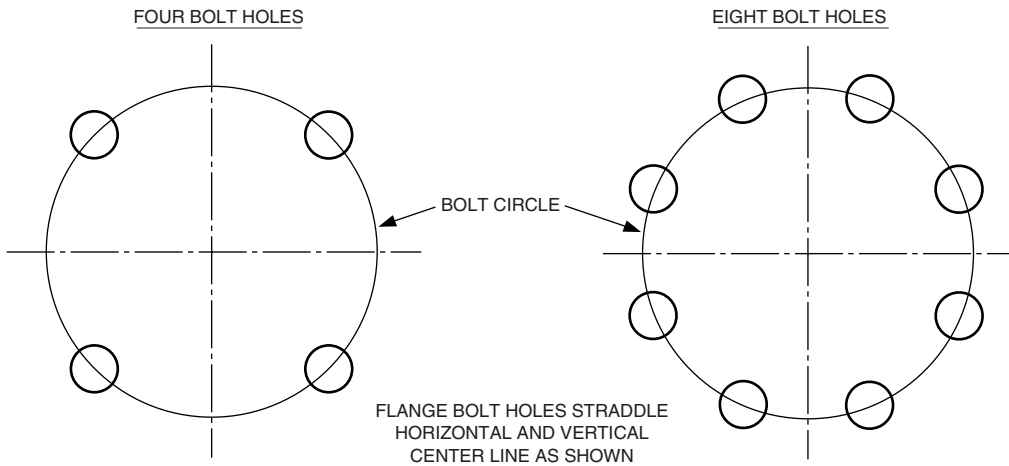
**Extended Mounted Seals with Carbon or Stainless Steel Flanges (Dimensions A, B, C and D)**

Nominal Flange Size	Flange Pressure Rating	Dimensional Data							
		Number of Bolt Holes	Bolt Hole Dia.	Bolt Circle Dia.	Dim. C		Dim. A	Dim. B(c)	Dim. D(d)
					CS(a)	SS(b)			
2 in (50 mm)	Class 150	4	<u>19</u> 0.75	<u>121</u> 4.75	<u>24</u> 0.9	<u>19</u> 0.8	<u>152</u> 6.0	<u>92</u> 3.62	<u>48.3</u> 1.90
	Class 150(e)	4	<u>19</u> 0.75	<u>121</u> 4.75	<u>24</u> 0.9	<u>19</u> 0.8	<u>152</u> 6.0	<u>92</u> 3.62	<u>47.3</u> 1.86
	Class 300	8	<u>19</u> 0.75	<u>127</u> 5.00	<u>27</u> 1.1	<u>22</u> 0.9	<u>165</u> 6.5	<u>92</u> 3.62	<u>48.3</u> 1.90
	Class 600	8	<u>19</u> 0.75	<u>127</u> 5.00	<u>32</u> 1.2	<u>32</u> 1.2	<u>165</u> 6.5	<u>92</u> 3.62	<u>48.3</u> 1.90
3 in (80 mm)	Class 150	4	<u>19</u> 0.75	<u>152</u> 6.00	<u>29</u> 1.1	<u>24</u> 0.9	<u>191</u> 7.5	<u>127</u> 5.00	<u>72.4</u> 2.85
	Class 150(f)	4	<u>19</u> 0.75	<u>152</u> 6.00	<u>29</u> 1.1	<u>24</u> 0.9	<u>191</u> 7.5	<u>127</u> 5.00	<u>70.9</u> 2.79
	Class 300	8	<u>22</u> 0.88	<u>168</u> 6.62	<u>33</u> 1.3	<u>28</u> 1.1	<u>211</u> 8.3	<u>127</u> 5.00	<u>72.4</u> 2.85
	Class 600	8	<u>22</u> 0.88	<u>168</u> 6.62	<u>38</u> 1.5	<u>38</u> 1.5	<u>211</u> 8.3	<u>127</u> 5.00	<u>72.4</u> 2.85
4 in (100 mm)	Class 150	8	<u>19</u> 0.75	<u>191</u> 7.50	<u>29</u> 1.1	<u>24</u> 0.9	<u>229</u> 9.0	<u>157.2</u> 6.19	<u>94.0</u> 3.70
	Class 300	8	<u>22</u> 0.88	<u>200</u> 7.88	<u>37</u> 1.4	<u>32</u> 1.2	<u>254</u> 10.0	<u>157.2</u> 6.19	<u>94.0</u> 3.70
	Class 600	8	<u>25</u> 1.00	<u>216</u> 8.50	<u>44</u> 1.8	<u>44</u> 1.8	<u>274</u> 10.8	<u>157.2</u> 6.19	<u>94.0</u> 3.70
DN50 (50 mm)	PN 10/40	4	<u>18</u> 0.71	<u>125</u> 4.92	<u>23</u> 0.9	<u>20</u> 0.8	<u>165</u> 6.5	<u>102</u> 4.02	<u>48.3</u> 1.9

Nominal Flange Size	Flange Pressure Rating	Dimensional Data							
		Number of Bolt Holes	Bolt Hole Dia.	Bolt Circle Dia.	Dim. C		Dim. A	Dim. B(c)	Dim. D(d)
					CS(a)	SS(b)			
DN80 (80 mm)	PN 10/40	8	<u>18</u> 0.71	<u>160</u> 6.30	<u>27</u> 1.1	<u>24</u> 0.9	<u>200</u> 7.9	<u>138</u> 5.43	<u>72.4</u> 2.85
DN100 (100 mm)	PN 10/16	8	<u>18</u> 0.71	<u>180</u> 7.09	<u>23</u> 0.9	<u>20</u> 0.8	<u>220</u> 8.7	<u>152</u> 6.00	<u>94.0</u> 3.7
	PN 25/40	8	<u>22</u> 0.87	<u>190</u> 7.48	<u>27</u> 1.1	<u>24</u> 0.9	<u>235</u> 9.3	<u>152</u> 6.00	<u>94.0</u> 3.7

- (a) Dimensions for Carbon Steel Flanges
- (b) Dimensions for Stainless Steel Flanges
- (c) OD of Raised Face (Gasket Surface)
- (d) Maximum Diameter of Extension Tube on Extended Mount Seal
- (e) With Optional Feature -D2
- (f) With Optional Feature -D3

FLANGE BOLT HOLE CONFIGURATIONS



Invensys Operations Management  
 5601 Granite Parkway Suite 1000  
 Plano, TX 75024  
[www.iom.invensys.com](http://www.iom.invensys.com)

Global Client Support  
 Inside U.S.: 1-866-746-6477  
 Outside U.S.: 1-508-549-2424 or contact  
 your local Foxboro representative.  
 Website: <http://support.ips.invensys.com>

Invensys, Foxboro, and I/A Series are trademarks of Invensys plc, its subsidiaries, and affiliates.  
 All other brand names may be trademarks of their respective owners.

Copyright 1999-2012 Invensys Systems, Inc.  
 All rights reserved