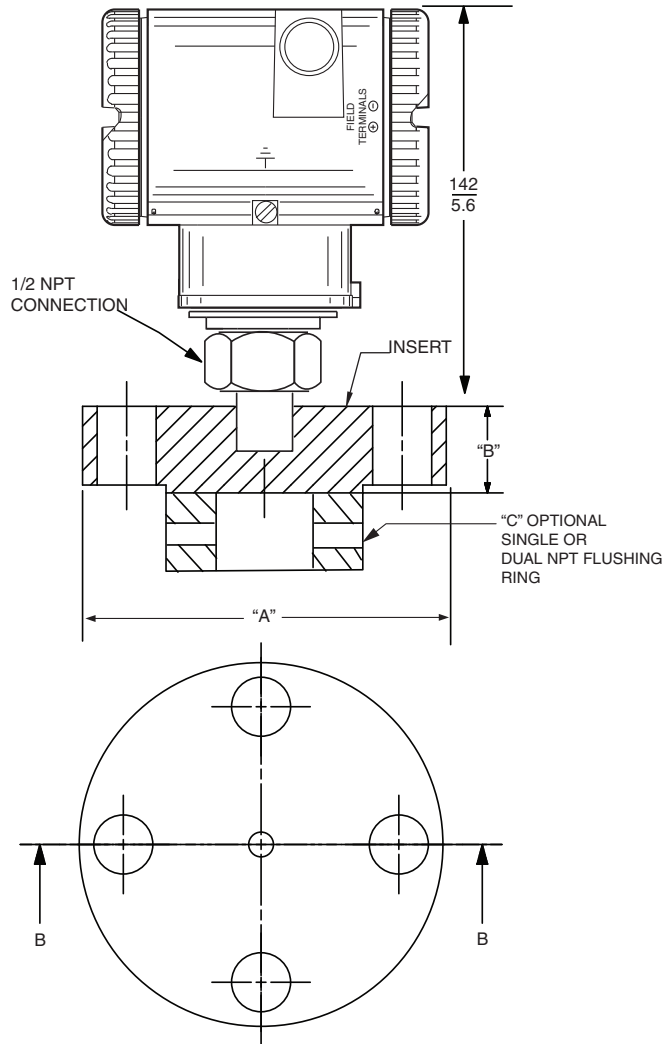


Flanged Flush Transmitter-Mounted Seals

Model PSFFD

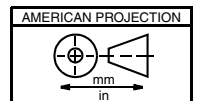
For use with I/A Series Pressure Transmitters

Flange Rating and Material Model Selections Codes E, F, G, and H (316 ss)



NOTES:

- 1. See Tables 1 and 2 on next page for dimensions "A", "B", and "C"
- 2. 4-Hole Bolt Configuration shown see Bolt Hole Configuration on Page 3.
- 3. For transmitter dimensions, refer to the transmitter Dimensional Print.



For dimensional information specific to your sales order, refer to Certified Dimensional Prints (CDPs) which can be ordered from your Foxboro Sales Office or authorized factory representative.

Table 1. Dimensional Data Model Selections Codes E, F, G, and H (316 ss)

| Nominal Flange Size | Flange Pressure Rating | Diaphragm Diameter | Number of Bolt Holes | Bolt Hole Dia. | Bolt Circle Dia. | Dim A | Dim. B |
|---------------------|------------------------|--------------------|----------------------|-------------------|----------------------|-----------------------|----------------------|
| 1.5 in (40 mm) | Class 150 | 1.9 | 4 | <u>15</u> 0.62 | <u>98.55</u> 3.88 | <u>127</u> 5.00 | <u>17.27</u> 0.68 |
| | Class 300 | | 4 | <u>22</u> 0.88 | <u>114.3</u> 4.50 | <u>155.4</u> 6.12 | <u>20.57</u> 0.81 |
| | Class 600 | | 4 | <u>22</u> 0.88 | <u>114.3</u> 4.50 | <u>155.4</u> 6.12 | <u>28.45</u> 1.12 |
| 2 in (50 mm) | Class 150 | 2.4 | 4 | <u>19</u> 0.75 | <u>121</u> 4.75 | <u>152</u> 6.0 | <u>19</u> 0.75 |
| | Class 300 | | 8 | <u>19</u> 0.75 | <u>127</u> 5.00 | <u>165</u> 6.50 | <u>22</u> 0.88 |
| | Class 600 | | 8 | <u>19</u> 0.75 | <u>127</u> 5.00 | <u>165</u> 6.50 | <u>31.75</u> 1.25 |
| 3 in (80 mm) | Class 150 | 3.5 | 4 | <u>19</u> 0.75 | <u>152</u> 6.00 | <u>190.5</u> 7.50 | <u>23.87</u> 0.94 |
| | Class 300 | | 8 | <u>22</u> 0.88 | <u>168</u> 6.62 | <u>209.55</u> 8.25 | <u>28.45</u> 1.12 |
| | Class 600 | | 8 | <u>22</u> 0.88 | <u>168</u> 6.62 | <u>209.55</u> 8.25 | <u>38</u> 1.50 |
| 4 in (100 mm) | Class 150 | 3.5 | 8 | <u>19</u> 0.75 | <u>190.5</u> 7.50 | <u>228.6</u> 9.0 | <u>23.87</u> 0.94 |
| | Class 300 | | 8 | <u>22</u> 0.88 | <u>200</u> 7.88 | <u>254</u> 10.0 | <u>31.75</u> 1.25 |
| | Class 600 | | 8 | <u>25</u> 1.00 | <u>216</u> 8.50 | <u>273</u> 10.75 | <u>44.45</u> 1.75 |
| DN40 (40 mm) | PN 10/40 | 1.9 | 4 | <u>18</u> 0.71 | <u>110</u> 4.33 | <u>149.86</u> 5.90 | <u>18.03</u> 0.71 |
| DN50 (50 mm) | PN 10/40 | 2.4 | 4 | <u>18</u> 0.71 | <u>125</u> 4.92 | <u>165</u> 6.50 | <u>19.81</u> 0.78 |
| DN80 (80 mm) | PN 10/40 | 3.5 | 8 | <u>18</u> 0.71 | <u>160</u> 6.30 | <u>199.89</u> 7.87 | <u>23.87</u> 0.94 |
| DN100 (100 mm) | PN 10/40 | 3.5 | 8 | <u>22</u> 0.87 | <u>190</u> 7.48 | <u>234.95</u> 9.25 | <u>23.87</u> 0.94 |

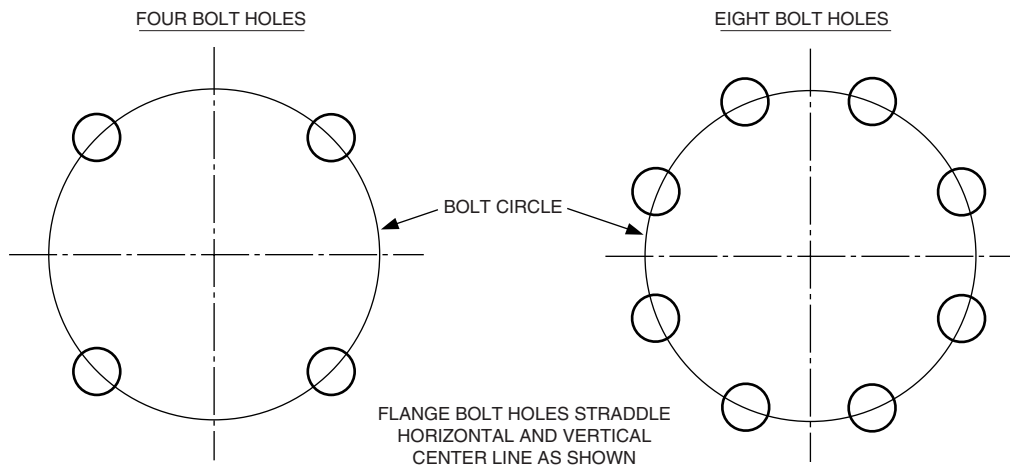
Table 2. Optional Flushing Ring Dimension "C"

| Raised Face Flange | Material | NPT Flushing Connections | Dim. C (Flushing Ring) | | |
|--------------------|----------------|--------------------------|------------------------|--------------|-------------|
| | | | I.D. | O.D. | Height |
| 1.50 in (40 mm) | 316 ss | 1/4 NPT | <u>40.89</u> | <u>73.15</u> | <u>25.0</u> |
| | Hastelloy C | 1/4 NPT | 1.61 | 2.88 | 1.00 |
| | 316 ss | 1/2 NPT | <u>40.89</u> | <u>80</u> | <u>38.1</u> |
| | Hastelloy C | 1/2 NPT | 1.61 | 3.00 | 1.50 |
| | 316 ss | 1/4 NPT (Dual) | <u>40.89</u> | <u>73.15</u> | <u>25.0</u> |
| | Hastelloy C | 1/4 NPT (Dual) | 1.61 | 2.88 | 1.00 |
| | 316 ss | 1/2 NPT (Dual) | <u>40.89</u> | <u>80</u> | <u>38.1</u> |
| 2 in (50 mm) | Hastelloy C | 1/2 NPT (Dual) | 1.61 | 3.00 | 1.50 |
| | 316 ss | 1/4 NPT | <u>52.58</u> | <u>92</u> | <u>25.0</u> |
| | Hastelloy C | 1/4 NPT | 2.07 | 3.62 | 1.00 |
| | 316 ss | 1/2 NPT | <u>52.58</u> | <u>92</u> | <u>38.1</u> |
| | Hastelloy C | 1/2 NPT | 2.07 | 3.62 | 1.50 |
| | 316 ss | 1/4 NPT (Dual) | <u>52.58</u> | <u>92</u> | <u>25.0</u> |
| | Hastelloy C | 1/4 NPT (Dual) | 2.07 | 3.62 | 1.00 |
| 316 ss | 1/2 NPT (Dual) | <u>52.58</u> | <u>92</u> | <u>38.1</u> | |
| Hastelloy C | 1/2 NPT (Dual) | 2.07 | 3.62 | 1.50 | |

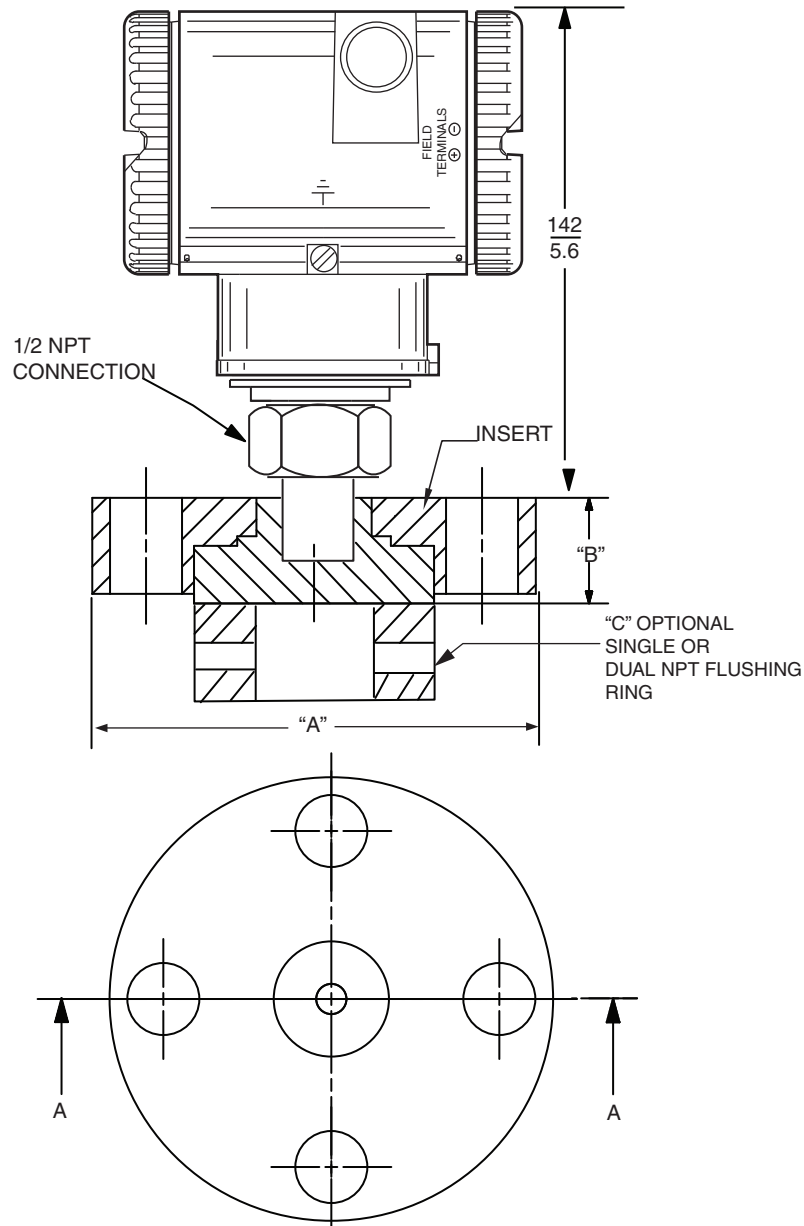
Table 2. Optional Flushing Ring Dimension "C"

| Raised Face Flange | Material | NPT Flushing Connections | Dim. C (Flushing Ring) | | |
|--------------------|-------------|--------------------------|------------------------|------------|-------------|
| | | | I.D. | O.D. | Height |
| 3 in (80 mm) | 316 ss | 1/4 NPT | <u>76.2</u> | <u>127</u> | <u>25.0</u> |
| | Hastelloy C | 1/4 NPT | 3.0 | 5.0 | 1.00 |
| | 316 ss | 1/2 NPT | <u>76.2</u> | <u>127</u> | <u>38.1</u> |
| | Hastelloy C | 1/2 NPT | 3.0 | 5.0 | 1.50 |
| | 316 ss | 1/4 NPT (Dual) | <u>76.2</u> | <u>127</u> | <u>25.0</u> |
| | Hastelloy C | 1/4 NPT (Dual) | 3.0 | 5.0 | 1.00 |
| | 316 ss | 1/2 NPT (Dual) | <u>76.2</u> | <u>127</u> | <u>38.1</u> |
| | Hastelloy C | 1/2 NPT (Dual) | 3.0 | 5.0 | 1.50 |
| 4 in (100 mm) | 316 ss | 1/4 NPT | <u>102.3</u> | <u>157</u> | <u>25.0</u> |
| | Hastelloy C | 1/4 NPT | 4.03 | 6.19 | 1.00 |
| | 316 ss | 1/2 NPT | <u>102.3</u> | <u>157</u> | <u>38.1</u> |
| | Hastelloy C | 1/2 NPT | 4.03 | 6.19 | 1.50 |
| | 316 ss | 1/4 NPT (Dual) | <u>102.3</u> | <u>157</u> | <u>25.0</u> |
| | Hastelloy C | 1/4 NPT (Dual) | 4.03 | 6.19 | 1.00 |
| | 316 ss | 1/2 NPT (Dual) | <u>102.3</u> | <u>157</u> | <u>38.1</u> |
| | Hastelloy C | 1/2 NPT (Dual) | 4.03 | 6.19 | 1.50 |

FLANGE BOLT HOLE CONFIGURATIONS



Flange Rating and Material Model Selections Codes 1, 2, 3, and A (Carbon Steel)



NOTES:

1. See Table 3 on next page for dimensions "A", "B", and Table 2 for dimension "C"
2. 4-Hole Bolt Configuration shown see Bolt Hole Configuration on Page 3.
3. For transmitter dimensions, refer to the transmitter Dimensional Print.

Table 3. Dimensional Data Model Selections Codes 1, 2, 3, and A (Carbon Steel)

| Nominal Flange Size | Flange Pressure Rating | Diaphragm Diameter | Number of Bolt Holes | Bolt Hole Dia. | Bolt Circle Dia. | Dim A | Dim. B |
|---------------------|------------------------|--------------------|----------------------|-------------------|----------------------|-----------------------|----------------------|
| 1.5 in (40 mm) | Class 150 | 1.9 | 4 | <u>15</u> 0.62 | <u>98.55</u> 3.88 | <u>127</u> 5.00 | <u>28.45</u> 1.12 |
| | Class 300 | | 4 | <u>22</u> 0.88 | <u>114.3</u> 4.50 | <u>155.4</u> 6.12 | <u>31.75</u> 1.25 |
| | Class 600 | | 4 | <u>22</u> 0.88 | <u>114.3</u> 4.50 | <u>155.4</u> 6.12 | <u>35.05</u> 1.38 |
| 2 in (50 mm) | Class 150 | 2.4 | 4 | <u>19</u> 0.75 | <u>121</u> 4.75 | <u>152</u> 6.0 | <u>30.23</u> 1.19 |
| | Class 300 | | 8 | <u>19</u> 0.75 | <u>127</u> 5.00 | <u>165</u> 6.50 | <u>33.53</u> 1.32 |
| | Class 600 | | 8 | <u>19</u> 0.75 | <u>127</u> 5.00 | <u>165</u> 6.50 | <u>38.1</u> 1.50 |
| 3 in (80 mm) | Class 150 | 3.5 | 4 | <u>19</u> 0.75 | <u>152</u> 6.00 | <u>190.5</u> 7.50 | <u>34.79</u> 1.37 |
| | Class 300 | | 8 | <u>22</u> 0.88 | <u>168</u> 6.62 | <u>209.55</u> 8.25 | <u>29.21</u> 1.15 |
| | Class 600 | | 8 | <u>22</u> 0.88 | <u>168</u> 6.62 | <u>209.55</u> 8.25 | <u>38</u> 1.50 |
| 4 in (100 mm) | Class 150 | 3.5 | 8 | <u>19</u> 0.75 | <u>190.5</u> 7.50 | <u>228.6</u> 9.0 | <u>35.05</u> 1.38 |
| | Class 300 | | 8 | <u>22</u> 0.88 | <u>200</u> 7.88 | <u>254</u> 10.0 | <u>42.93</u> 1.69 |
| | Class 600 | | 8 | <u>25</u> 1.00 | <u>216</u> 8.50 | <u>273</u> 10.75 | <u>50</u> 2.00 |
| DN40 (40 mm) | PN 10/40 | 1.9 | 4 | <u>18</u> 0.71 | <u>110</u> 4.33 | <u>152.15</u> 5.90 | <u>32.51</u> 1.28 |
| DN50 (50 mm) | PN 10/40 | 2.4 | 4 | <u>18</u> 0.71 | <u>125</u> 4.92 | <u>165</u> 6.50 | <u>33.53</u> 1.32 |
| DN80 (80 mm) | PN 10/40 | 3.5 | 8 | <u>18</u> 0.71 | <u>160</u> 6.30 | <u>199.89</u> 7.87 | <u>33.53</u> 1.32 |
| DN100 (100 mm) | PN 10/40 | 3.5 | 8 | <u>22</u> 0.87 | <u>190</u> 7.48 | <u>234.95</u> 9.25 | <u>33.53</u> 1.32 |

Invensys Operations Management
5601 Granite Parkway Suite 1000
Plano, TX 75024
www.iom.invensys.com

Global Client Support
Inside U.S.: 1-866-746-6477
Outside U.S.: 1-508-549-2424 or contact
your local Foxboro representative.
Website: <http://support.ips.invensys.com>

Invensys, Foxboro, and I/A Series are trademarks of Invensys plc,
its subsidiaries, and affiliates.
All other brand names may be trademarks of their respective
owners.

Copyright 2012 Invensys Systems, Inc.
All rights reserved