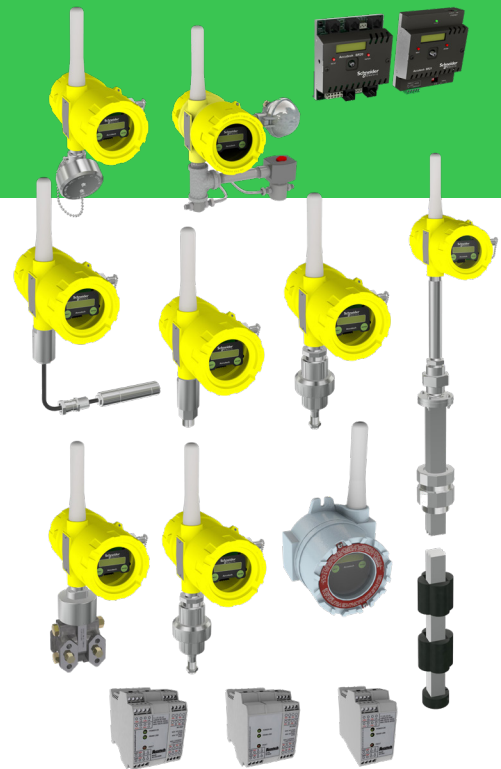


Accutech Manager

Configuration, Diagnostics & Network Management Software
for Accutech Wireless Instrumentation

Product at a glance

Integral to the Accutech™ product offering is Accutech Manager, the Windows®-based services management software that provides a user-friendly environment for field unit configuration and diagnostics. The product also functions as an effective and useful network management tool and can be used for temporary data collection and testing.



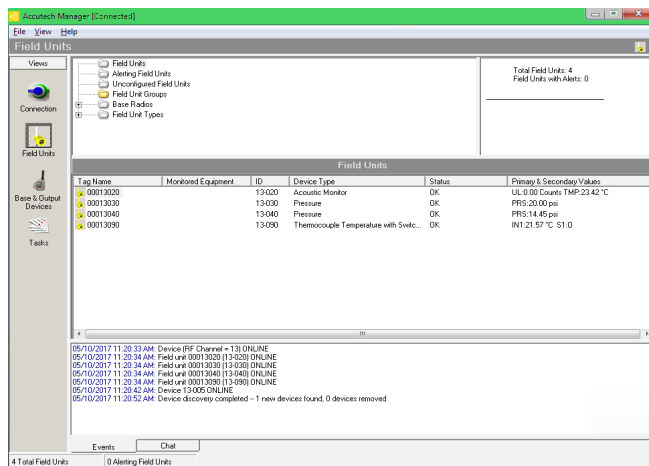
- Advanced field unit configuration interface
- Provides enhanced system diagnostics
- Powerful network management tool
- Client/server architecture
- Supports over-the-air firmware upgrades
- Field-unit-to-base radio communication authentication

Accutech Manager

Configuration, Diagnostics & Network Management Software

Description

Taking advantage of its client/server architecture model, Accutech Manager may be installed onto single PCs for technicians, multiple PCs for multiple services management consoles and on corporate LAN servers for round-the-clock operation.



Configuration Management

Enhanced Configuration Management features provide tools to locally or remotely configure field unit parameters, and enable over-the-air firmware upgrades, right from the management software. The following parameters are accessible for configuration:

- Individual Field Unit Properties (sampling)
- Normal Conditions
- Out of Spec Conditions
- Thresholds
- Custom Messages

The following views are available:

Field Unit Groups

- Individual Field Units View
- Tag Number
- Monitored Equipment
- ID
- Device Type
- Status

Field Unit (Alarm) Status View

- OK
- Alarm1, Alarm2, etc.
- RF Interruption

Base Radio View

- Tag Name
- Serial Number
- RS-485 Address
- # of Field Units
- Status

Performance Management

Accutech Manager serves up field unit and base radio performance data in an easy-to-use interface that incorporates a real time data plot with other pertinent device information such as status, event logs and counters and statistics.

Reporting and Analysis

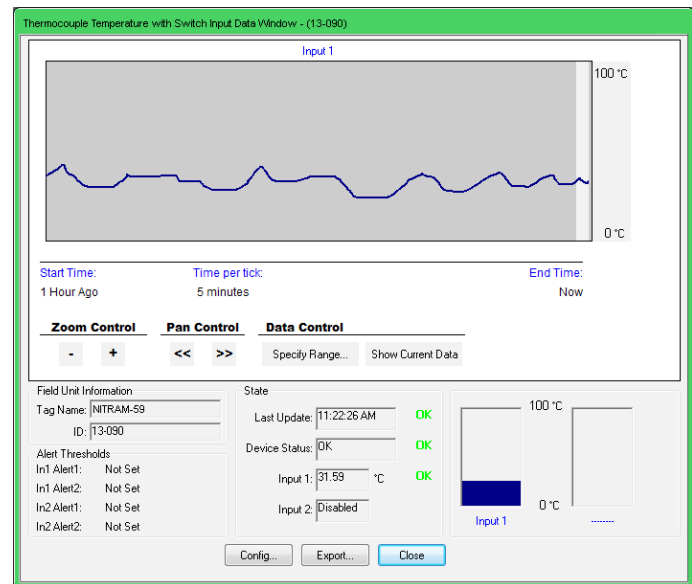
The database stores and maintains field unit monitoring and measurement data over time which can be exported in Text (.txt) and Comma-Separated Variable (.csv) formats to many popular software programs, such as Oracle®, SQL, and Excel® in order to perform analysis and to create reports.

Accutech Manager

Configuration, Diagnostics & Network Management Software

System Requirements

- PC with 300 Megahertz (MHz) or higher processor clock speed recommended; Intel Pentium® / Celeron® Family, or AMD K6/Athlon® /Duron Family, or compatible processor recommended.
- Microsoft® Windows® 2000 or Windows® XP operating system
- 256 Megabytes RAM or higher recommended
- 30 Megabytes available hard disk space, 10 Gigabytes if the database is installed on the local PC



Part Number	Description
TBUM350048	Accutech Manager, configuration and diagnostics software

Disclaimer: Schneider Electric reserves the right to change product specifications. For ordering information call direct worldwide: +1 (613) 591-1943; Toll Free within North America: +1 (888) 267-2232 or Email: orderstrss@se.com. For more information visit www.se.com.

Foxboro by Schneider Electric
 38 Neponset Avenue,
 Foxboro, Massachusetts 02035 USA
 Direct Worldwide: +1 (508) 549-2424
 Email: systems.support@se.com
 Toll Free within North America: +1 (866) 746-6477
www.se.com

Life Is On

Schneider
 Electric