



ENGLISH



**FFF/REG**

BSPP – NPT – SW

**IVFL/REG**

BW – DIN – ANSI

Angle-seat Control Valves

# FFF/REG – IVFL/REG – ANGLE-SEAT CONTROL VALVE

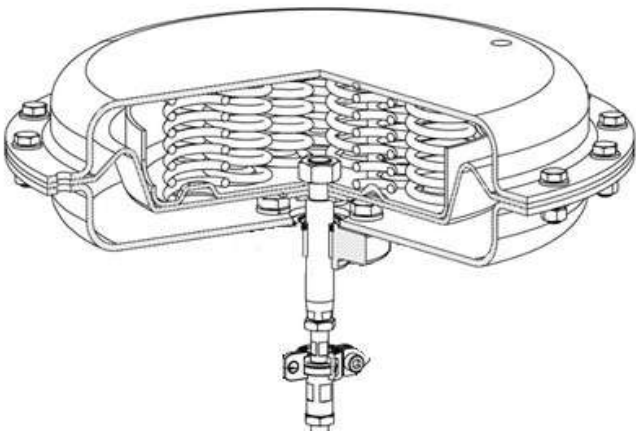
Angle-seat valve with body in A351 CF8M and multi-spring actuator to control process parameters with compact body.

- DN:** from DN 8 (1/4") to DN 65 (2"1/2)
- Connections:** BSPP - NPT Thread  
SW – BW  
DIN – ANSI Flanges
- Packing:** PTFE / PTFE-GR
- Plug Seal:** PTFE  
PTFE-coated EPDM  
EPDM
- Leakage Class:** VI
- Characteristic:** Eq%
- Actuator Material:** Polyurethane-painted Fe-P04  
Stainless Steel S30400
- Actuator Function:** Normally Closed  
Normally Open
- Feeding Pressure:** 3÷15 psi  
6÷18 psi  
6÷30 psi  
9÷32 psi
- Min Room T:** down to -30°C                      -22°F
- Max Room T:** up to +80°C                        +176°F
- Min T:** down to -40°C                        -40°F
- Max T:** up to +200°C                        +446°F
- Max P:** up to 40 bar                            580 psi
- Function:** 2/2 Way
- Instrumentation:** I/P Converter  
Electro-pneumatic Positioner  
Digital Positioner  
Solenoid Valve  
Filter-Regulator
- Certification:** PED 2014/68/EU  
ATEX 2014/34/EU



## Air Consumption

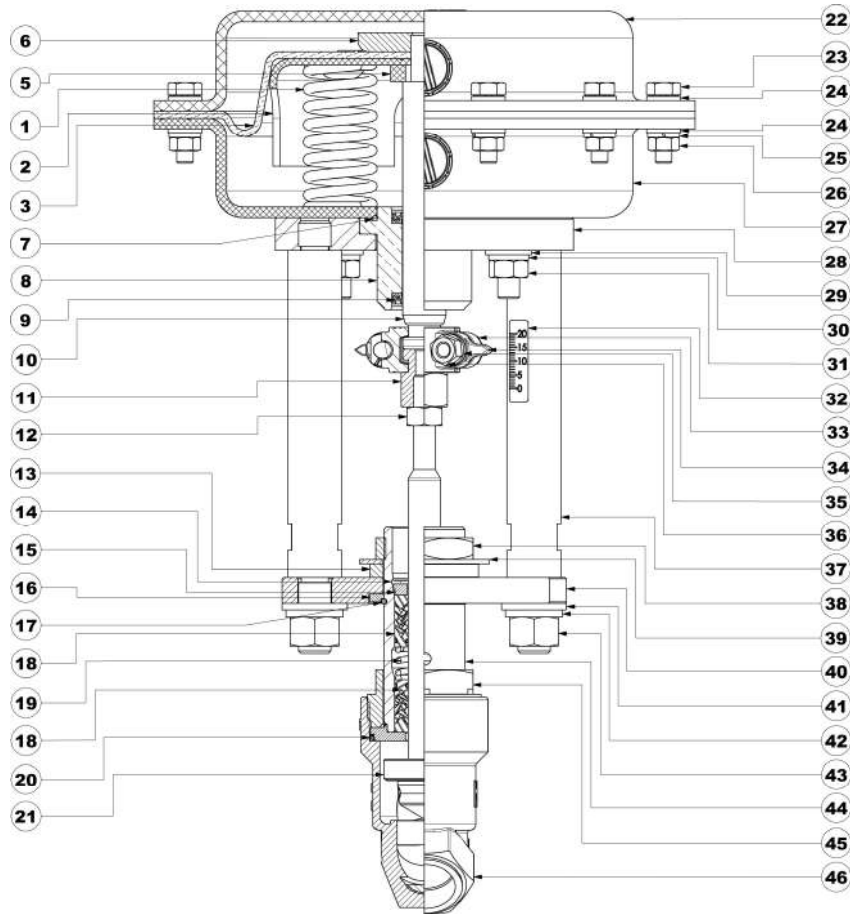
Actuator [mm]	Stroke [mm]	Air Consumption [l]
200	15	0,760
275	15	1,438
360	15	2,463
430	15	3,513



# Kv / ΔP Table

		Max Differential Pressure Δp [bar]					
		Kv Cv	Signal [psi] →	3÷15	6÷18	6÷30	9÷32
		Eq%	Signal [barg] →	0,2÷1	0,42÷1,26	0,4÷2,1	0,6÷2,24
		Stroke [mm]	Max Control P [barg] →	1	1,26	2,21	2,4
DN	Seat Ø [mm]	15	Serv. Ø <sub>e</sub> [mm] ↓	A	B	C	D
8	8	1,2 1,4	200	40	40	40	40
10	11	2,3 2,6	200	24	40	40	40
15	15	4,5 5,2	200	14,7	30	30	40,4
			275	37	50	50	50
20	20	8,5 9,9	200	8,3	16,5	16,5	22,7
			275	20,8	43	43	50
			360	41,6	50	50	50
25	25	11,3 13,1	200	4,9	10	10	13,4
			275	12,3	26	26	29,9
			360	24,6	50	50	50
			430	24,9	50	50	50
32	32	18,9 22,0	200	3,4	7	7	9,5
			275	8,7	18	18	21
			360	17,3	36	36	42
			430	17,5	35	35	50
40	40	22,3 25,9	200	2,3	4,7	4,7	6,3
			275	5,8	12	12	14
			360	11,5	24	24	28
			430	11,6	23,3	23,3	34,9
50	50	43,4 50,3	200	1,4	2,9	2,9	3,9
			275	3,6	7,7	7,7	8,8
			360	7,2	15	15	17,5
			430	7,3	14,6	14,6	21,9
65	65	61,8 71,7	200	1,4	2,9	2,9	3,9
			275	3,6	7,7	7,7	8,8
			360	7,2	15	15	17,5
			430	7,3	14,6	14,6	21,9



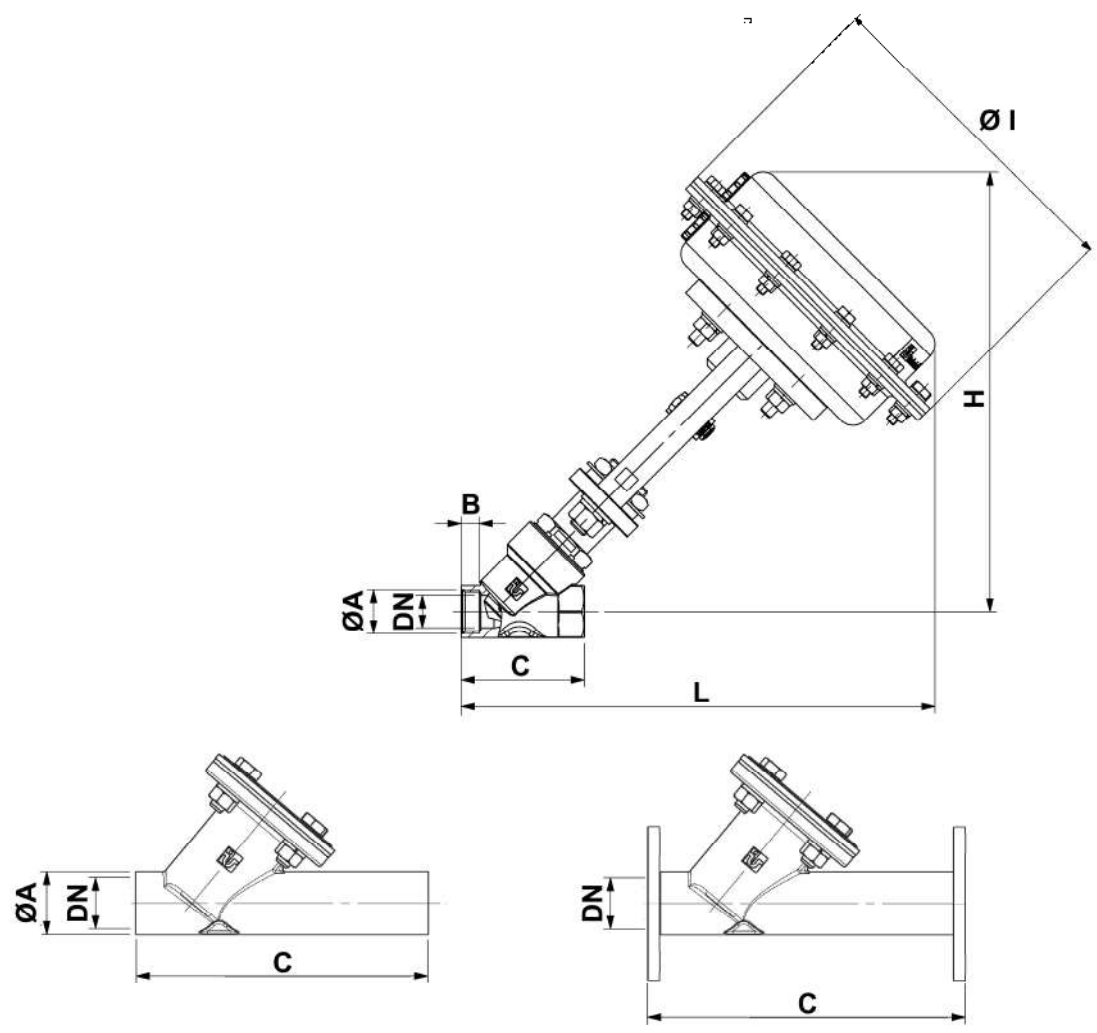


No.	DESCRIPTION	MATERIALS	
		Standard Actuator	AISI 304 Actuator
1	Springs	Harmonic Steel	
2	Spring-holding plate	Fe - P04	
3	Membrane	NBR rubber fabric	
4	Hexagon nut	Galvanized Steel CL.8	
5	Distance ring washer	AISI 304	
6	Holding washer	Galvanized ASTM A105	
7	O-Ring	NBR	
8	Bushing	Brass	Galvanized Brass
9	BA gasket	NBR	
10	Upper stem	AISI 304	
11	Preload adjustment nut	S42000	
12	Hexagon nut	AISI 304	
13	Washer	AISI 304	
14	Seeger ring	AISI 304	
15	Packing washer	AISI 304	
16	Washer	AISI 304	
17	Shoulder ring	Harmonic Steel	
18	Packing gland	PTFE + PTFE/GRAPHITE + FPM	
19	Packing spring	AISI 316	
20	Body gasket	PTFE	
21	Plug	AISI 316 + PTFE	
		S31600 + PTFE-coated EPDM HT	
		AISI 316 + EPDM HT	
22	Upper head	Fe - P04	AISI 304

No.	DESCRIPTION	MATERIALS	
		Standard Actuator	AISI 304 Actuator
23	Hex-head screw	Galvanized Steel CL.8.8	AISI 304
24	Plain washer	Galvanized Steel	AISI 304
25	Spring washer	Galvanized Steel	AISI 304
26	Hexagon nut	Galvanized Steel CL.8.8	AISI 304
27	Lower head	Fe - P04	AISI 304
28	Upper flange	S30400	
29	Plain washer	Galvanized Steel	AISI 304
30	Spring washer	Galvanized Steel	AISI 304
31	Hexagon nut	Galvanized Steel CL.8.8	AISI 304
32	Stroke label	Polyester	
33	Hex-head screw	AISI 304	
34	Clamp	A351 CF8	
35	Spring washer	AISI 304	
36	Hexagon nut	AISI 304	
37	Spacer column	AISI 304	
38	Locking nut	AISI 304	
39	Safety washer	AISI 304	
40	Lower flange	AISI 304	
41	Plain washer	AISI 304	
42	Spring washer	AISI 304	
43	Hexagon nut	AISI 304	
44	Intermediate body	AISI 304 + AISI 316	
45	Closing screw	A351 CF8	
46	Valve body	A351 CF8M	



# Dimensions



DN	Ø A			B		C			Ø I	L				H				Ch
	BSPP	SW	BW	BSPP	SW	BSPP-SW	BW	Flange		200	275	360	430	200	275	360	430	
8	1/4"	14	13,7	8	10	65	105	65	According to the sealing Dp (200-275-360-430)	285	/	/	/	267	298,5	/	/	27
10	3/8"	17,5	17,2	8	10	65	105	65		285	/	/	/	267	298,5	/	/	27
15	1/2"	22	21,3	8	11	65	146	130		285	316,5	/	/	267	298,5	/	/	27
20	3/4"	27,5	26,9	9	12	75	146	150		288,5	320	347,5	/	268,5	300	327,5	/	32
25	1"	34	33,7	12	15	90	156	160		302,5	334	361,5	/	276	307,5	335	/	39
32	1"1/4	43	42,4	14	17	110	176	180		324	355,5	383	420	289	320,5	348	385	49
40	1"1/2	49	48,3	14	17	120	196	200		328	359,5	387	424	294	325,5	353	390	55
50	2"	61	60,3	16	19	150	226	230		343	374,5	402	439	305	336,5	364	401	68
65	2"1/2	77	76,1	26	28	185	290	290		413	444	474	510	361	395	423	460	88



# ITALVALVOLE: Valve's DNA



**italvalvole** <sup>®</sup> **47<sup>th</sup>**  
S.A.S.  
di SPADON OSCAR & C.



**Stylish Mechanics**



