



EcoStruxure™ Machine Expert

A single software environment to
automate machines

schneider-electric.com

Life Is On

Schneider
Electric

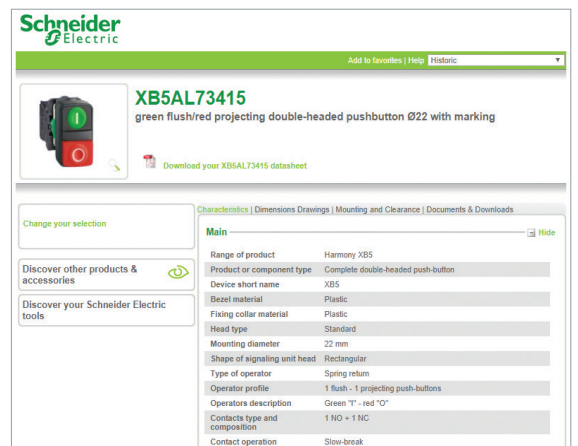
Quick access to product information

Get technical information about your product

References

Telefast Pre-wired System
Modicon ABE9 IP67 passive splitter boxes

References					
Splitter boxes with connection by M23 connector					
Number of channels	Connection by	LED indicator	Reference	Weight (kg)	
4	4 x M12 female connection	Yes	ABE912W1223	0.280	
6	6 x M12 female connection	Yes	ABE912W1226	0.370	
8	8 x M12 female connection	Yes	ABE912W1228	0.500	
12	12 x M12 female connection	Yes	ABE912W1236	0.750	
16	16 x M12 female connection	Yes	ABE912W1248	1.000	
Splitter boxes with connection by cable					
Number of channels	Connection by	Length (m)	LED indicator	Reference	Weight (kg)
4	4 x M12 female connectors	14.4	No	ABE912W1215	0.280
6	6 x M12 female connectors	14.4	No	ABE912W1218	0.400
8	8 x M12 female connectors	14.4	No	ABE912W1221	0.520
12	12 x M12 female connectors	14.4	No	ABE912W1224	0.740
16	16 x M12 female connectors	14.4	No	ABE912W1227	1.010



Schneider Electric

XB5AL73415
green flush/red projecting double-headed pushbutton Ø22 with marking

Download your XB5AL73415 datasheet

Change your selection

Discover other products & accessories

Discover your Schneider Electric tools

Characteristics | Dimensions Drawings | Mounting and Clearance | Documents & Downloads

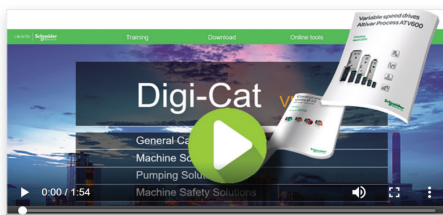
Main

Range of product	Harmony XB5
Product or component type	Complete double-headed push-button
Device short name	XB5
Bezel material	Plastic
Fixing collar material	Plastic
Head type	Standard
Mounting diameter	22 mm
Shape of signaling unit head	Rectangular
Type of operator	Spring return
Operator profile	1 flush - 1 projecting push-buttons
Operators description	Green "I" - red "O"
Contacts type and composition	1 NO + 1 NC
Contact operation	Slow-break

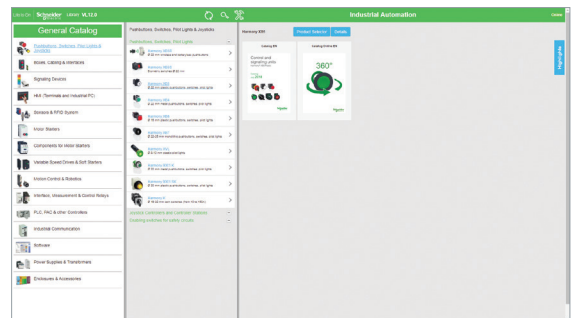
Each commercial reference presented in a catalog contains a hyperlink. Click on it to obtain the technical information of the product:

- Characteristics, Dimensions and drawings, Mounting and clearance, Connections and schemas, Performance curves
- Product image, Instruction sheet, User guide, Product certifications, End of life manual

Find your catalog



- > With just 3 clicks, you can reach the Industrial Automation and Control catalogs, in both English and French
- > Download Digi-Cat with this [link](#)



General Catalog

Industrial Automation

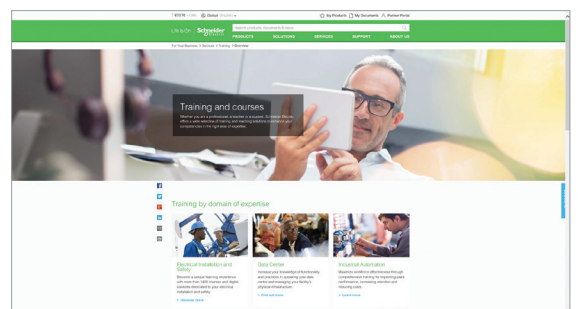
360°

- Updated quarterly
- Embeds product selectors and configurators, 360° images, training centers
- Optimized search by commercial reference

Select your training



- > Find the right [Training](#) for your needs on our Global website
- > Locate the training center with the selector tool, using this [link](#)



Training and courses

Training by domain of expertise

Electrical Installation and Safety | Data Center | Industrial Automation

General content

<i>Introduction to EcoStruxure Machine</i>	<i>page 2</i>
<i>Selection guide: controllers for industrial machines</i>	<i>page 4</i>
<i>Machine automation</i>	<i>page 6</i>

EcoStruxure™ Machine Expert

A single software environment to automate machines

■ Presentation	
- EcoStruxure Machine Expert software	<i>page 8</i>
- HMI programming	<i>page 8</i>
- Configured devices	<i>page 9</i>
- Related functions configured	<i>page 9</i>
- Learning, Training and Examples	<i>page 9</i>
■ Functions	
- Project management,	
- Installation with Machine Expert Installer,	
- Application Function Block (AFB) libraries	<i>page 10</i>
■ Characteristics	
- IEC 61131-3 programming languages,	
- Programming services,	
- HMI-based services,	
- Motion control,	
- PLCopen MC,	
- Global services	<i>page 11</i>
- Integrated Fieldbus configurators,	
- Connectivity services and networks,	
- Expert and solutions libraries	<i>page 12</i>
- Advanced software development,	
- Software Tools,	
- Transparency – FDT/DTM	<i>page 13</i>
■ Description	
- Free download,	
- STANDARD license,	
- PROFESSIONAL license	<i>page 14</i>
■ EcoStruxure Machine Expert – Safety	<i>page 15</i>
■ References	
- Software installation,	
- Software licenses,	
- Software addons	<i>page 16</i>
- Software update licenses	<i>page 17</i>
■ Index	<i>page 18</i>

To be competitive in today's digital era, machine builders must be innovative. Smart machines, those that are better connected, more flexible, more efficient, and safe, are enabling machine builders to innovate in ways never before possible.

EcoStruxure, Schneider Electric's open, IoT-enabled architecture and platform, offers powerful solutions for the digital era. As part of this, EcoStruxure Machine brings powerful opportunities for machine builders and OEMs, empowering them to offer smart machines and compete in the new, digital era.

EcoStruxure Machine brings together key technologies for product connectivity and edge control on premises, and cloud technologies to provide analytics and digital services. EcoStruxure Machine helps you bring more innovation and added value to your customers throughout the entire machine life cycle.

Innovation at Every Level for Machines is full systems across three layers:

- Connected products
Our connected products for measuring, actuating, device level monitoring, and control adhere to open standards to provide unmatched integration opportunities and flexibility
- Edge Control
We are IIoT-ready with a proven set of tested and validated reference architectures that enable the design of end-to-end open, connected, and interoperable systems based on industry standards. Ethernet and OPC UA facilitates IT/OT convergence meaning machine builders reap benefits from web interfaces and cloud.

- Apps, Analytics & Services
Seamless integration of machines to the IT layer allows the collection and aggregation of data ready for analysis – for machine builders and end users alike this means increased uptime and the ability to find information faster for more efficient operations and maintenance.

These levels are completely integrated from shop floor to top floor. And we have cloud offers and end-to-end cybersecurity wrapped around.

EcoStruxure Machine makes it easier for OEMs/ machine builders to offer their customers smarter machines. The advent of smart machines is driven by the changing needs of end users:

- Evolving workforce
- Reducing costs
- Dynamic markets
- Shorter life cycles
- Prioritizing safety and cybersecurity

EcoStruxure Machine provides one solution for the whole machine life cycle:




- With Smart Design & Engineering the time to market is reduced by up to 30% using our automated engineering and the simulation capabilities
- During Commissioning & Operation of the machine, resources such as energy, material and loss can be improved, and with seamless integration to the IT world efficiency can be improved by up to 40%
- Smart Maintenance & Services reduces the time for corrective actions up to 50%

EcoStruxure™ Machine

Innovation At Every Level



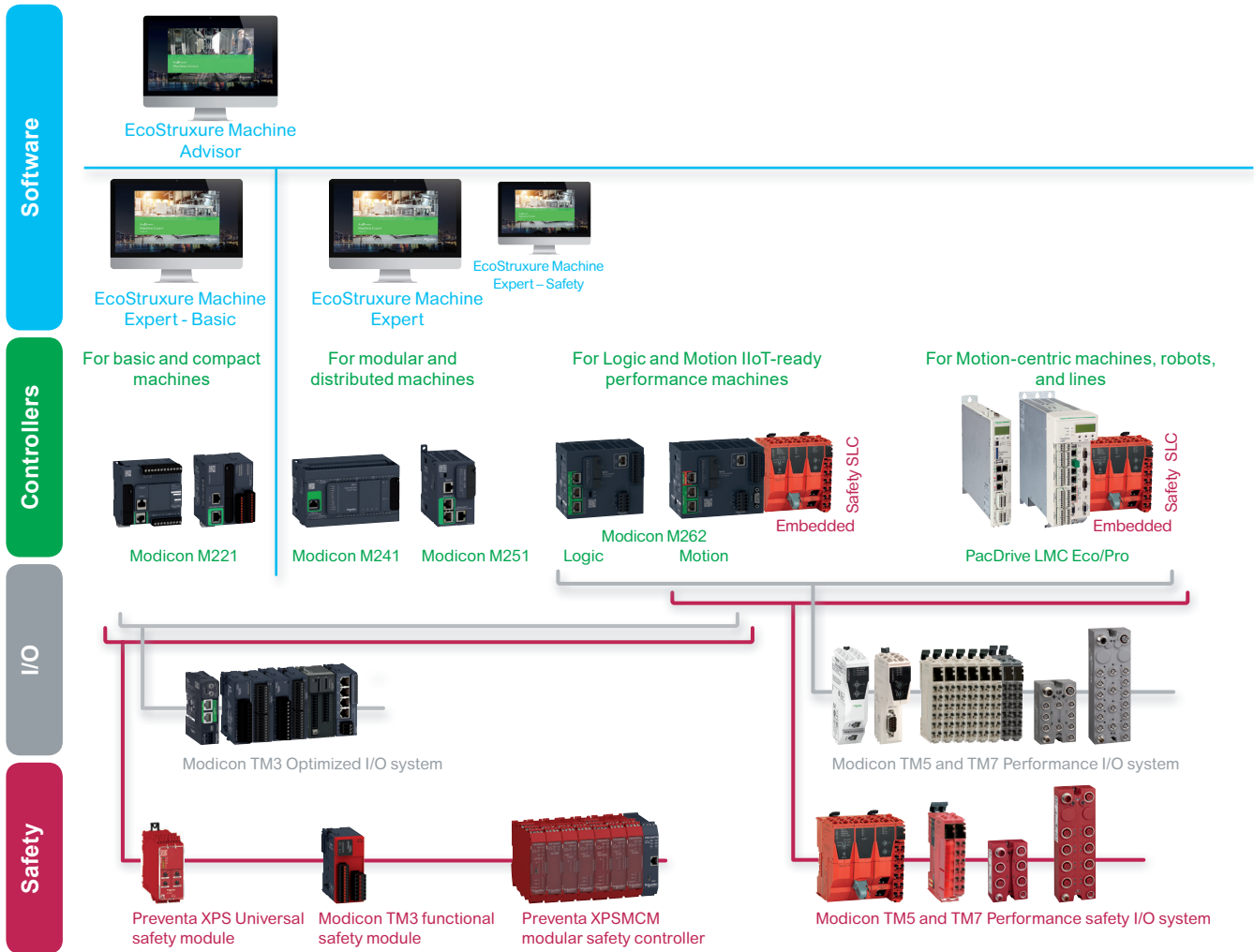
* The Schneider Electric industrial software business and AVEVA have merged to trade as AVEVA Group plc, a UK listed company. The Schneider Electric and Life is On trademarks are owned by Schneider Electric and are being licensed to AVEVA by Schneider Electric.

Applications		Logic controller			Logic/Motion controller		Motion controller
Type	Specification	For hardwired architectures	For performance-demanding applications		For modular and distributed architectures	IloT ready for performance machines	For automating machines/lines with 0 - 130 servo or robot axes
							
Performance		0.2 µs/inst	22 ns/inst		22 ns/inst	3...5 ns/inst	0.5...2 ns/inst
Memory		640 KB RAM, 2 MB Flash	64 MB RAM, 128 MB Flash		64 MB RAM, 128 MB Flash	256 MB RAM, 256 MB Flash	128 KB to 256 KB NV RAM 512 MB DDR2 to 1 GB DDR3L
Supply voltage		24 V --- or 100...240 V ~	24 V --- or 100...240 V ~		24 V ---	24 V ---	24 V ---
Communication fieldbus and networks	Embedded	<ul style="list-style-type: none"> ■ EtherNet/IP ■ RS 232/RS 485 serial link ■ USB mini-B programming port 	<ul style="list-style-type: none"> ■ Ethernet ■ CANopen (master) and SAE J1939 ■ 2 serial links ■ USB mini-B programming port 		<ul style="list-style-type: none"> ■ EtherNet/IP ■ CANopen (master) and SAE J1939 ■ Serial link ■ USB mini-B programming port 	<ul style="list-style-type: none"> ■ EtherNet/IP ■ Sercos III ■ Modbus TCP ■ Serial link ■ USB mini-B programming port 	<ul style="list-style-type: none"> ■ EtherNet/IP ■ Sercos III ■ CANopen ■ Profibus ■ Profinet ■ EtherCAT
	Optional	<ul style="list-style-type: none"> ■ 1 Serial Line 	<ul style="list-style-type: none"> ■ Ethernet ■ Profibus DP 		<ul style="list-style-type: none"> ■ Ethernet ■ Profibus DP 	<ul style="list-style-type: none"> ■ Ethernet ■ CANopen 	<ul style="list-style-type: none"> ■ CANopen ■ Profibus DP ■ RT-Ethernet
Embedded I/O	Input types	Up to 40 logic inputs Up to 2 analog inputs	Up to 24 logic inputs		–	4 fast digital inputs	Up to 20 digital inputs Up to 16 touch probe inputs Up to 4 interrupt inputs Up to 2 analog inputs
	Output types	Up to 16 relay outputs Up to 16 transistor outputs	Up to 16 transistor outputs		–	4 fast digital outputs	Up to 16 digital outputs Up to 2 analog outputs
Synchronized axes		–	–		–	Up to 16 synchronized axes	Up to 130 synchronized axes
Configuration software		EcoStruxure Machine Expert-Basic (1)	EcoStruxure Machine Expert V1.1 (2)		EcoStruxure Machine Expert V1.1 (2)	EcoStruxure Machine Expert V1.1	EcoStruxure Machine Expert V1.1 (2)
Compatible expansion I/O module ranges (consult the catalog)	Local I/O	● Modicon TM3 (DIA3ED2140109EN)	● Modicon TM3 (DIA3ED2140109EN)		● Modicon TM3 (DIA3ED2140109EN)	● Modicon TM3 (DIA3ED2140109EN)	–
	Remote I/O	● Modicon TM3 (DIA3ED2140109EN)	● Modicon TM3 (DIA3ED2140109EN)		● Modicon TM3 (DIA3ED2140109EN)	● Modicon TM3 (DIA3ED2140109EN)	–
	Distributed I/O on Ethernet	● Modicon TM3 (DIA3ED2140109EN)	● Modicon TM3 (DIA3ED2140109EN) ● Modicon TM5 (DIA3ED2131204EN)		● Modicon TM3 (DIA3ED2140109EN) ● Modicon TM5 (DIA3ED2131204EN)	● Modicon TM3 (DIA3ED2140109EN) ● Modicon TM5 (DIA3ED2131204EN)	● Modicon TM5 (DIA3ED2131204EN)
	Distributed I/O on CANopen	–	–		–	● Modicon TM5 (DIA3ED2131204EN) ● Modicon TM7 (DIA3ED2140405EN)	● Modicon TM5 (DIA3ED2131204EN) ● Modicon TM7 (DIA3ED2140405EN)
	Distributed I/O on Sercos	–	–		–	● Modicon TM5 (DIA3ED2131204EN)	● Modicon TM5 (DIA3ED2131204EN)
Safety I/O	⚠ Modicon TM3 (DIA3ED2140109EN)	⚠ Modicon TM3 (DIA3ED2140109EN)		⚠ Modicon TM3 (DIA3ED2140109EN)	⚠ Modicon TM3 (DIA3ED2140109EN) ⚠ Modicon TM5 (DIA3ED2131204EN) ⚠ Modicon TM7 (DIA3ED2140405EN)	⚠ Modicon TM5 (DIA3ED2131204EN) ⚠ Modicon TM7 (DIA3ED2140405EN)	
Controller range	Modicon M221/M221 Book	Modicon M241		Modicon M251	Modicon M262	LMC Eco, LMC Pro2	
More details in catalog	DIA3ED2140106EN	DIA3ED2140107EN		DIA3ED2140108EN	DIA3ED2180503EN	DIA7ED2160303EN	

(1) Formerly named SoMachine Basic.

(2) Formerly named SoMachine, EcoStruxure Machine Expert merges both former software ranges, SoMachine and SoMachine Motion.

Machine Automation



Machine control

The scalability and consistency of I/O ranges allow you to select the right offer depending on your needs

Embedded Safety provides holistic solutions to Modicon M262 and PacDrive LMC controllers, increasing overall safety demand in Machine Automation

All these devices are managed within a single software, EcoStruxure Machine Expert, a powerful and collaborative engineering environment

- > From basic to motion- and robot-centric machines with the PacDrive 3 offer, Modicon controllers and solutions bring a consistent and scalable response to achieving flexibility, performance, productivity, and digitization.
- > Modicon TM3 Optimized I/O system for more compact and modular machines
- > Modicon TM5 for more performance-demanding machines, with Modicon TM7 for harsh environments; Both Performance I/O ranges (Modicon TM5 and TM7) allow safety functions to be implemented using the Modicon TM5CSLC safety logic controller
- > Preventa XPS Universal safety modules cover a wide range of safety functions, suitable for small applications with 4-5 safety functions, with diagnostic information provided to controllers via a single wire connection
- > Modicon TM3 safety functional modules are suitable for small applications covering E-Stop functions and diagnostics via TM3 bus
- > Preventa XPSMCM modular safety controllers are suitable for medium size applications with up to 20 safety functions and diagnostics via Modbus TCP, EtherNet/IP, EtherCAT, or Profinet
- > **EcoStruxure Machine Expert – Safety** optional add-on for programming safety logic controllers
- > **EcoStruxure Machine Expert – Basic** software for programming Modicon M221 logic controllers: an intuitive standalone environment accessible to basic skilled technicians
- > **EcoStruxure Machine Advisor** is a cloud-based services platform designed for machine builders to track machines in operation worldwide, monitor performance data, and resolve exceptional events, while reducing support costs by up to 50%

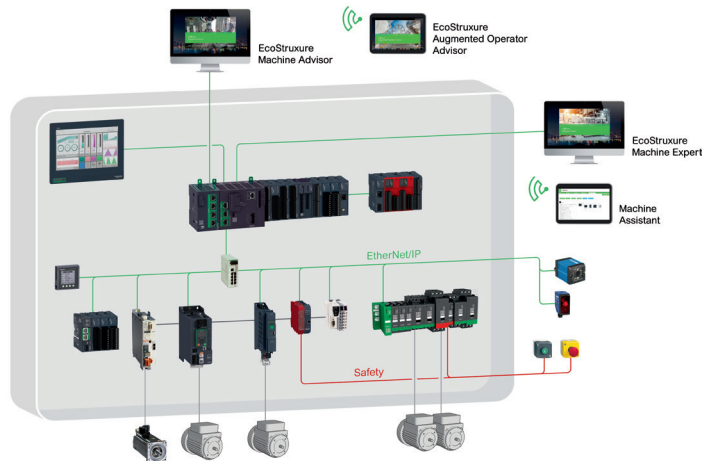
Machine Automation

Comprehensive Schneider offers for machine builders

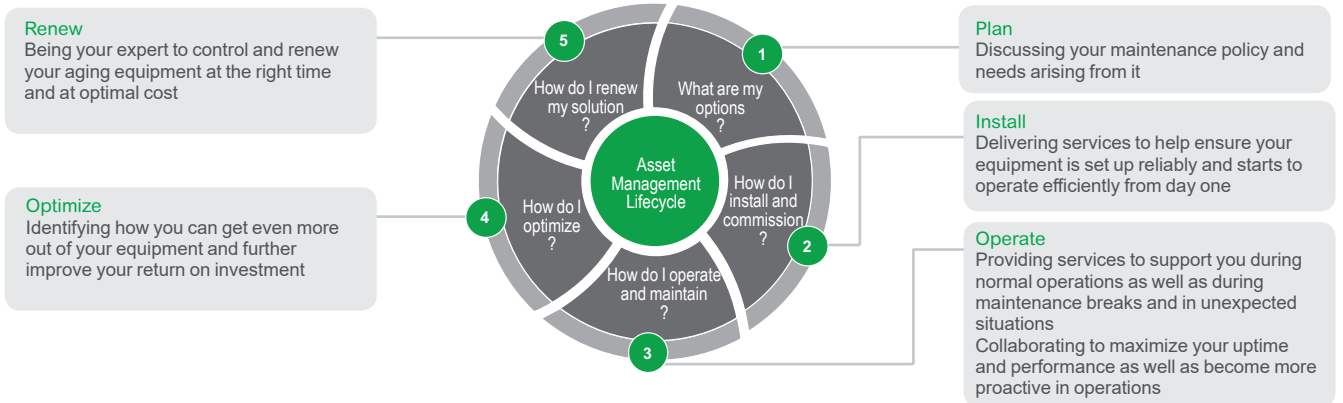
- > Lexium servo drives, motors, and robotics are designed to control applications ranging from a single independent axis up to high-performance synchronized multi-axis machines requiring high-speed and precise positioning and movements



- > The Lexium offer is designed for a broad range of motion-centric machines in applications such as [Packaging](#), [Material Handling](#), [Material Working](#), [Food and Beverage](#), and [Electronics](#)
- > Schneider Electric has developed Tested Validated & Documented Architectures (TVDA) applicable for generic machine control applications as well as for dedicated segment applications such as Packaging, Material Handling, Material Working, Hoisting, Pumping, or generic [Machine Control applications](#)



Choose Schneider Electric to help secure your investment and benefit from worldwide services at every step of your project



- > From planning and inception to modernization, we help ensure optimal technical and business performance. Our field service engineers combine 30+ years of manufacturer-level experience with the latest technology to bring innovation to every level of our offer, and every step of your project.
- > Our machine control dedicated services empower you to maximize your business infrastructure and face increasingly stringent demands on productivity, safety, equipment availability, and performance optimization.

EcoStruxure Machine Expert

A single software environment to automate machines



EcoStruxure Machine Expert V1.1 programming software

Presentation

EcoStruxure Machine Expert software V1.1

EcoStruxure Machine Expert V1.1 is the machine builder's solution software for developing, configuring, and commissioning the entire machine in a single software environment, including logic control, motion control, remote IO systems, safety programming, motor control, and related network automation functions.

EcoStruxure Machine Expert is a single software environment with:

- > One software package
- > One project file
- > One connection
- > One download operation

EcoStruxure Machine Expert is a software environment covering the full engineering lifecycle:

- > Version management
- > Testing
- > Deployment
- > Diagnostics and remote services
- > In addition Machine Expert interfaces with various engineering tools via open interfaces

It supports all the IEC 61131-3 languages, integrated fieldbus configurators, expert diagnostic and debugging functions, motion design as well as multiple capabilities for commissioning, maintenance and visualization.

EcoStruxure Machine Expert V1.1 is the new name and the next release of the three-engineering software: **SoMachine** and **SoMachine Motion** and **SoSafe Programmable**, now merged into one single environment.

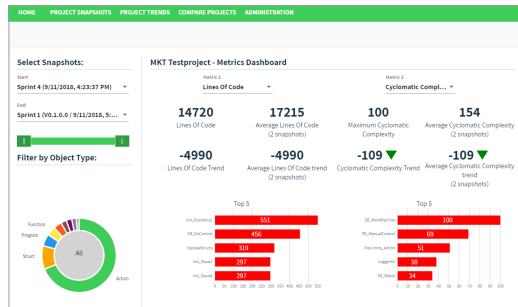
EcoStruxure Machine Expert introduces innovative features for efficient machine development:

- > Collaborative work with SVN client
- > New IIoT standard libraries (MQTTs, HTTPs, JSON...) to connect the controller to web APIs our cloud services like EcoStruxure Machine Advisor or third party systems. Project examples and function templates help the usage of these technologies.
- > Machine code analysis to improve coding efficiency, code quality coding consistency in teams and now uses cloud technology to store the evolution of your code quality:
 - Check code convention using standard or customized rules
 - Understand the DNA of the code with structured graphical code exploration and identify critical sections in the code
 - Get metrics with quality indicators
- > Machine Advisor Code Analysis is a cloud based service. It helps you to track deviations from your code quality over the life time of the application. Find more information on our [website](#).
- > New Functional view in the project tree to program machines in a modular way
- > Python programming language interface:
 - Increase Programming Efficiency, by automating development and project generation
 - Integrate **Machine Expert** in the company's individual environment and automatize workflows
- > ETEST framework for higher quality of application code, thanks to automated IEC software unit test
- > Import projects from **SoMachine** and **SoMachine Motion** software
- > Import projects from **SoSafe Programmable** software
- > New HTML5 browser responsive documentation accessible offline or online from any smart device with an internet connection

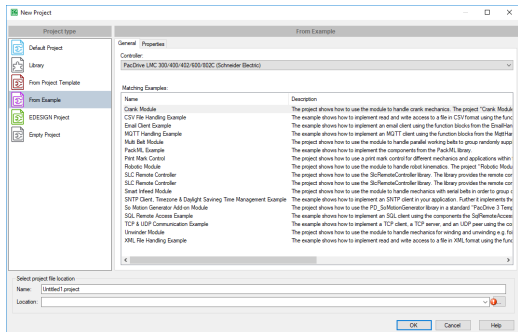
HMI programming

EcoStruxure Machine Expert V1.1 embeds:

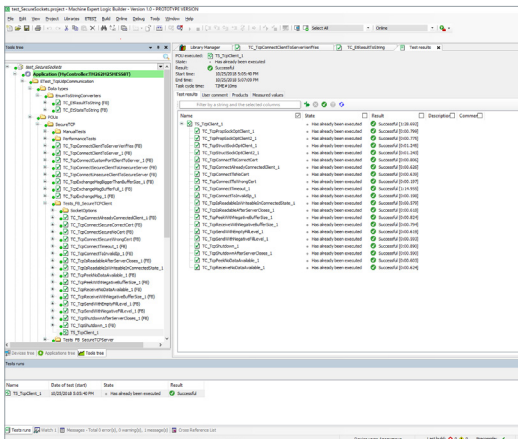
- > Vijeo Designer to program a wide range of Magelis industrial HMI
- > A Webvisu editor to design and program a visualization screens that are running on the controller's runtime. A controller Webvisu can be accessed remotely via any web browser on many different devices (computers, tablets...)



Cloud based code analysis



New project



ETEST result view

EcoStruxure Machine Expert

A single software environment to automate machines

Presentation

Configured controllers with EcoStruxure Machine Expert V1.1 software

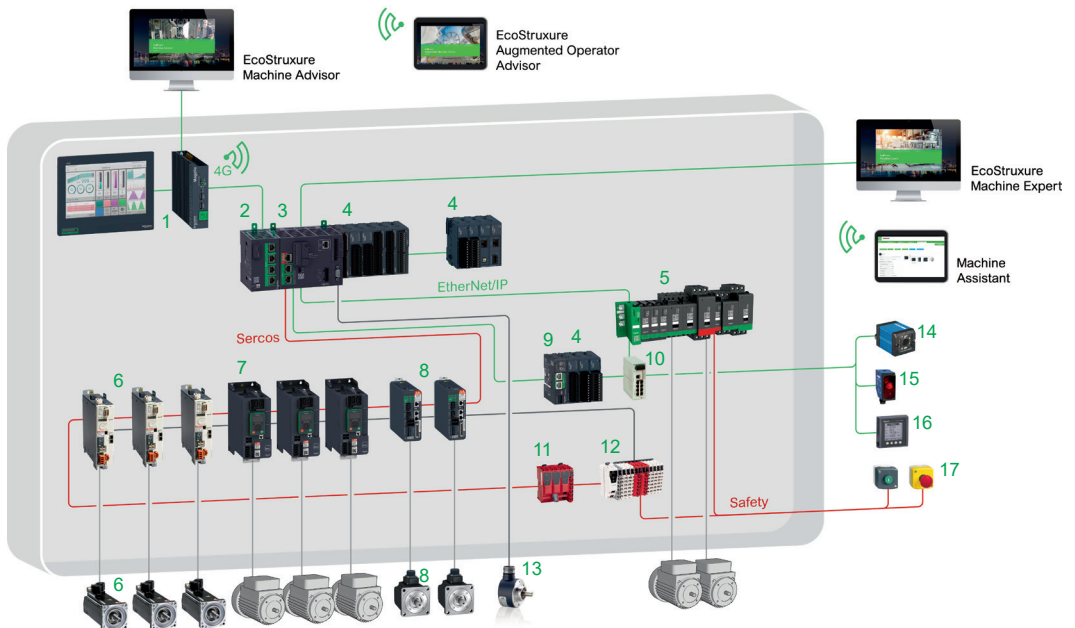
- > **Motion controllers:** PacDrive 3 LMC Eco/LMC Pro/LMC pro2 (catalog ref. [DIA7ED2160303EN](#))
- > **Logic controllers**
 - Modicon M241 (catalog ref. [DIA3ED2140107EN](#))
 - Modicon M251 (catalog ref. [DIA3ED2140108EN](#))
- > **Logic/Motion controller:** Modicon M262 (catalog ref. [DIA3ED2180503EN](#))
- > **HMI controllers:** Magelis SCU (catalog ref. [DIA5ED2130505EN](#))

Configured devices with EcoStruxure Machine Expert V1.1 software (1)

Devices can be easily inserted to the project from the Hardware catalog window using simple drag & drop.

- > **Servo drives:** Lexium 28, Lexium 32, Lexium 52 stand-alone, Lexium 62 multi axis, Lexium SD3
- > **Integrated drives:** Lexium ILA/ILE/ILS, Lexium 62 ILM, Lexium 32i, Lexium 62 ILD detached
- > **Robotics:** Lexium STS, Lexium T series, Lexium P series, Lexium PAS/CAS/TAS/MAX
- > **I/O systems**
 - Modicon TM3: I/O modules and bus coupler (catalog ref. [DIA3ED2140109EN](#))
 - Modicon TM5: IP20 I/O modules, and fieldbus interface module (catalog ref. [DIA3ED2131204EN](#))
 - Modicon TM7: IP67 I/O blocks (catalog ref. [DIA3ED2140405EN](#))
- > **Safety logic controllers:** Modicon TM5CSLC
- > **HMI:** Magelis GTO standard panels, Magelis GK advanced Touchscreen/Keyboard panels, Magelis XBTGH advanced held panels, Magelis GTU high performance modular HMI, Magelis STO compact panels
- > **Variable speed drives:** Altivar Machine ATV320, Altivar Machine ATV340, Altivar Machine ATV600, Altivar Process ATV900, Altivar 71
- > **Sensors:** RFID sensors XG, Vision sensors XUW
- > **Battery-less and wireless pushbuttons:** Harmony XB5R /XB4R (Ø 22 mm)
- > **Connected load management system:** Tesys island

Managed TVDA with EcoStruxure Machine Expert V1.1 software



Solution breakdown

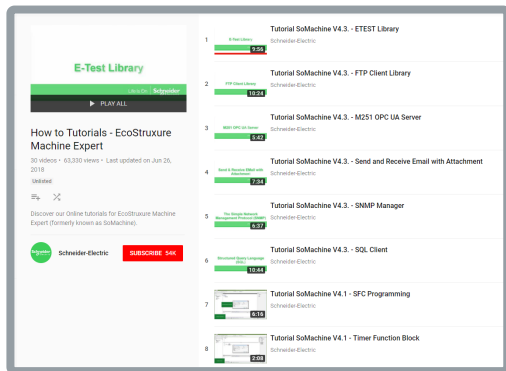
- | | |
|--|--|
| 1 Magelis iPC: Touchscreen display and IIoT Edge Box | 10 Modicon Ethernet switch |
| 2 Modicon TMSE4 Ethernet Smart communication module | 11 Modicon TM5CSLC Safety logic controller |
| 3 Modicon M262 Motion controller | 12 Modicon TM5: Sercos interface module and I/O modules (Digital, Analog and Safety I/O) |
| 4 Modicon TM3 expansion modules (Digital, Analog and Expert I/O) | 13 Encoders |
| 5 Tesys island load management system | 14 Bar code reader |
| 6 Lexium 32S servo drives and BMH/BSH servo motors | 15 Telemecanique Sensors proximity sensors |
| 7 Altivar Machine ATV340S variable speed drives | 16 Power Meter |
| 8 Lexium 28 servo drives and BCH2 servo motors | 17 Harmony® XB5 Plastic pushbutton and Emergency stop |
| 9 Modicon TM3 Ethernet bus coupler | |



(1) Please refer to our catalogs on [Digi-Cat](#) (download [Digi-Cat](#))

EcoStruxure Machine Expert

A single software environment to automate machines



Video tutorials on [YouTube](#)

Functions

Related functions configured with EcoStruxure Machine Expert V1.1 software

Hardware related functions can be configured:

- > Discrete, analog I/O: from simple IO to sophisticated features like controller to controller communication.
- > High speed counter (HSC) inputs
- > High speed outputs:
 - Pulse width modulation (PWM)
 - Pulse generator (PLS)
 - Pulse train output (PTO)
 - Frequency generator
- > Communication ports (Ethernet, Sercos, serial links):
 - Ethernet: EtherNet/IP, Modbus TCP client and server, Exchange table
 - Sercos bus
 - Serial links: Modbus RTU or ASCII, ASCII protocol, Display
 - The Modbus Serial IO Scanner and Modbus TCP IO Scanner protocols are used to automatically configure an Altivar variable speed drive, other Schneider devices, or a generic device.

Learning, Training and Examples

From the help menu, several tools and links help you to get started with EcoStruxure Machine Expert. This section provides content access to both beginners and advanced users to learn how to use and take advantage of the software:

Discover:

- Project examples and their documentation
- Project templates
- How to guides
- Video tutorials to be consulted on [YouTube](#)

Project management

The project management function is used to:

- > Create a new project from scratch or by using project templates or examples
- > Open a project from the PC (hard disk, CD-ROM, USB flash drive, etc.)
- > Retrieve a project from a controller (logic, safety, motion or motor controller) or a servo drive
- > Open a project from former SoMachine or SoMachine Motion versions
- > Open a Twido or M221 project using conversion tools
- > Print a project as a customized report

It is possible to define additional project specific information properties (company & creator details, project protection information, application information...), attach documents and custom or configuration pictures. The software also supports automatic versioning.

Installation

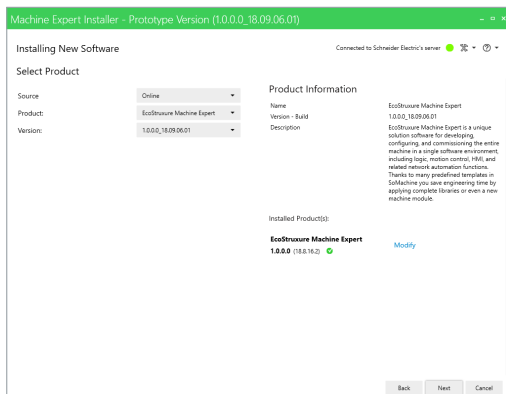
- > EcoStruxure Machine Expert software can be installed directly from the cloud. Either perform a full installation or select the components you need. **Machine Expert Installer** downloads the required components only. Offline installation from a local folder is also possible. The installer can be [downloaded](#) from Schneider Electric website.
- > EcoStruxure Machine Expert software V1.1 can be also installed from a USB drive, available in catalog, see [page 16](#).

Application Function Block (AFB) libraries for dedicated solutions

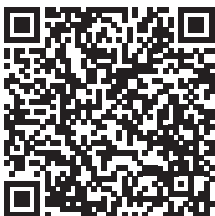
EcoStruxure Machine Expert includes application function block libraries for selected machines. Their simple configuration speeds up design, commissioning, installation, and troubleshooting.

These libraries cover the following applications:

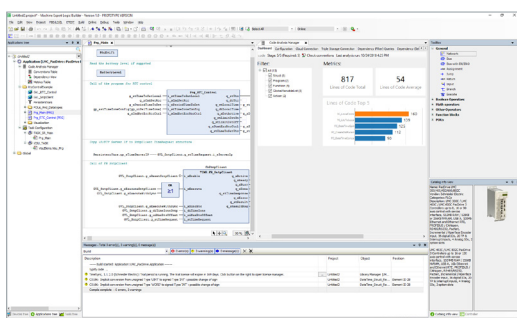
- Packaging,
- Hoisting,
- Handling,
- Pumping,
- Material working,
- and more ...



[Machine Expert installer](#)







Download installer



Logic Builder

Characteristics (Depending on the controller capabilities)

Feature	Description
IEC 61131-3 programming languages	<ul style="list-style-type: none"> ■ IL (Instruction List) ■ LD (Ladder Diagram) ■ SFC (Sequential Function Chart) ■ ST (Structured Text) ■ FBD (Function Block Diagram) ■ CFC (Continuous Function Chart)
Programming services	<ul style="list-style-type: none"> ■ Multi-tasking: Cyclic, Fast, Event ■ Functions (Func) and Function Blocks (FBs) ■ Data Unit Types (DUTs) ■ On-line changes ■ Watch windows ■ Graphical monitoring of variables (trace) ■ Breakpoints, step-by-step execution ■ Simulation ■ Visualization for application and machine set-up ■ "ETEST" automated unit testing system to improve the quality of the application
HMI-based services	<ul style="list-style-type: none"> ■ Graphics libraries containing more than 4,000 2D and 3D objects ■ Simple drawn objects (points, lines, rectangles, ellipses, etc.) ■ Preconfigured objects (button, switch, bargraph, etc.) ■ Recipes (32 groups of 256 recipes with max 1,024 ingredients) ■ Action tables ■ Alarms ■ Printing ■ Java scripts ■ Multimedia file support: wav, png, jpg, emf, bmp ■ Variable trending
Motion control	<p>For PacDrive controllers</p> <ul style="list-style-type: none"> ■ Motion design (cam editor/motion, intelligent line shaft, software motion generator...) ■ Ready to use function blocks for motion applications like: <ul style="list-style-type: none">  Multi-belt,  Smart infeed,  Unwinder,  Crank,  Robotics, and more ...
PLCopen MC	 <ul style="list-style-type: none"> ■ PLCopen Motion Control Function Blocks Motion and drive function block libraries for variable speed drives, servo drives, and stepper drives ■ Visualization screens for commissioning
Global services	<ul style="list-style-type: none"> ■ User access and profile ■ Project documentation printing ■ Project comparison (control) ■ Variable sharing based on publish/subscribe mechanism ■ Library version management ■ Machine energy efficiency monitoring

Characteristics (Depending on the controller capabilities)

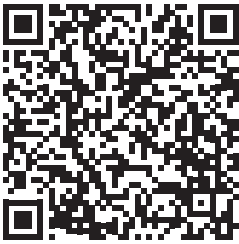
Feature	Description
Integrated Fieldbus configurators      	<ul style="list-style-type: none"> ■ Fieldbus <ul style="list-style-type: none"> - EtherNet/IP - Modbus TCP - Modbus Serial link - Sercos - CANopen (supported CANopen protocols: J1939, CANmotion) - EtherCAT - PROFINET - PROFIBUS
Connectivity services and networks     	<ul style="list-style-type: none"> ■ FTP Client library <ul style="list-style-type: none"> - The controller can send or get files to/from a FTP server on the network ■ FTP server <ul style="list-style-type: none"> - Some controllers also have an embedded FTP server ■ SQL Client library <ul style="list-style-type: none"> - To read or write in the databases from the controller ■ Machine to cloud connectivity <ul style="list-style-type: none"> - MQTT Handling (Message Queue Telemetry Transport) - JSON (JavaScript Object Notation), a lightweight data-interchange format ■ HTTPs library <ul style="list-style-type: none"> - To access to web services/servers, call APIs and push data to cloud services in a secure, simple and standard way ■ Email library <ul style="list-style-type: none"> - To send and receive emails with attachments to/from the controller ■ SNMP Manager (Simple Network Management Protocol) <ul style="list-style-type: none"> - To control or read information about SNMP devices on the network ■ TCP/UDP library ■ SNTP (Simple Network Time Protocol) Client function blocks for synchronizing the clock with other systems ■ OPC UA Server embedded in the controller <ul style="list-style-type: none"> - For direct communication with OPC UA clients ■ File Format utility library <ul style="list-style-type: none"> - For reading and writing XML (eXtended Markup Language) and CSV (Character Separated Values) files - To simplify and standardize communication between the controller and external systems
Expert and solutions libraries 	<ul style="list-style-type: none"> ■ PLCopen function blocks for motion control. Examples: MC_MoveAbsolute, MC_CamIn, ServoDrive, etc. ■ Packaging function blocks. Examples: analog film tension control, rotary knife, unwinder, AutoTune etc.. ■ PackML library (Packaging Machine Language) <ul style="list-style-type: none"> ■ Material handling: tracking, turntable, conveyor, multi belt, smart infeed, etc. ■ Hoisting functions: <ul style="list-style-type: none"> - Hoisting function blocks: anti-sway, anti-crab, hoisting position synchronization, etc. - Application template for industrial crane ■ Pumping application: <ul style="list-style-type: none"> - Pumping function blocks: cavitation protection, friction loss, PID, stage/destage functions, etc. - Application template for booster ■ Material working and processing: application templates, rotary knife, flying shear, temperature monitoring, etc.

Characteristics (Depending on the controller capabilities)

Feature	Description
<p>Advanced software development</p> <div style="display: flex; align-items: center; gap: 20px;">   </div>	<ul style="list-style-type: none"> ■ Source Code Management with Subversion (SVN) for collaborative work on the same project ■ Import/Export in PLC Open format ■ Machine code analysis <ul style="list-style-type: none"> - It analyzes the application code with semantic web technologies which understand the DNA of the code and identify code pain-points to rework - Store the result of your code analysis to a cloud repository and follow the evolution of your code quality over the time ■ Python programming interface to automate development tasks and project generation ■ Functional View to develop a machine project (code and devices) into modules and reuse them
<p>Software Tools</p>	<p>Software tools are installed with EcoStruxure Machine Expert to assist Machine Builders at every step of the machine lifecycle:</p> <ul style="list-style-type: none"> > Design & engineering, > Commissioning & operation, > Maintenance & service ■ Controller assistant <ul style="list-style-type: none"> - Manage the firmware and application without opening EcoStruxure Machine Expert - Create images and backup of the controller ■ Machine Expert Installer <ul style="list-style-type: none"> - To install, modify, update and uninstall EcoStruxure Machine Expert software suite ■ License manager <ul style="list-style-type: none"> - Activate and manage licenses for all Schneider Electric licensed products - Support registration and license transfer ■ Software Update <ul style="list-style-type: none"> - Online notification of all available updates and news about the installed Schneider Electric software products - Download and install updates, patches, and extensions from the web ■ Diagnostics <ul style="list-style-type: none"> - Be informed of the machine status, including save operations, device parameters, the state of the I/O, and a graphic view of the Sercos ring architecture ■ Device assistant <ul style="list-style-type: none"> - Firmware manager for Lexium servo drives ■ Logic Builder Diff Viewer <ul style="list-style-type: none"> - A tool to differentiate 2 source codes ■ Motion Sizer <ul style="list-style-type: none"> - A tool for CAM design and power unit dimensioning Includes a product selector feature out of more than 13000 products (Drives, Motors, and Gearboxes)
<p>Transparency – FDT/DTM</p>	<div style="display: flex; align-items: center; gap: 20px;">  </div> <p>EcoStruxure Machine Expert is a FDT (Field Device Tool) container and supports standard DTM (Device Type Manager) files. This allows any device having a DTM to be configured inside EcoStruxure Machine Expert software, and reduces the number of tools to use to configure a machine</p>

EcoStruxure Machine Expert

A single software environment to automate machines



Download installer

Presentation

EcoStruxure Machine Expert software V1.1

EcoStruxure Machine Expert software V1.1 can be downloaded and installed for free, using the [Machine Expert installer](#). EcoStruxure Machine Expert software V1.1 can be installed from a USB drive, available in catalog, see [page 16](#).

At the end of a 42-days trial period, a license is required to continue to use EcoStruxure Machine Expert.

- > Some maintenance features remain available and free of access and do not require a license
- > EcoStruxure Machine Expert software is available in 9 languages: English, French, German, Italian, Japanese, Portuguese, Simplified Chinese, Spanish, and Turkish
- > Operating systems for engineering PC: Microsoft Windows® 7 Professional 32-bit/64-bit, Microsoft Windows® 8.1 Professional 32-bit/64-bit, Microsoft Windows® 10 Professional 32-bit/64-bit
- > Documentation is supplied in electronic format: complete online help with complementary documentation in pdf version

Software licenses description			
	Free (No license)	STANDARD license	PROFESSIONAL license
Basic maintenance tools Open project, save, program offline, compile, download program, view online status Maintenance tools...	☑	☑	☑
STANDARD programming features Debug/breakpoints, variable forcing, pause, online change, manage project archive, Web visu, offline documentation ... ETEST limited, J1939, OPC UA server. Expert libraries...	Trial (1)	☑	☑
Advanced features Collaborative Work (SVN), Code Analysis full, ETEST full	Trial (1)	Trial (1)	☑
Robotic libraries and toolbox	Trial (1)	-	☑
Machine Safety maintenance Former SoSafe Programmable maintenance software	☑	☑	☑
Machine safety development Former SoSafe Programmable software	Trial (1)	Trial, then EcoStruxure Machine Expert – Safety license is requested	Trial, then EcoStruxure Machine Expert – Safety license is requested
HMI design Vijeo Designer	Trial (1)	☑	☑

(1) Trial period lasts 42 days.



Modicon TM5CSLC●00FS safety logic controller

Presentation

EcoStruxure Machine Expert – Safety

EcoStruxure Machine Expert – Safety (former SoSafe programmable software) is the software add-on to program Modicon TM5CSLC●00FS safety logic controllers (1). This add-on is to be installed inside the Machine Expert Installer.

Apart from the maintenance features, a dedicated license is required to program this controller.

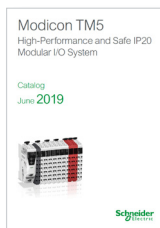
- > Modicon TM5CSLC●00FS safety logic controllers are suitable for safety applications requiring distributed safety connected to physical input/output devices over Sercos common network and certified up to EN ISO 13849-1 PLe Category 4, and EN/IEC 62061 SIL3.
- > They can be added to PacDrive 3 or in a Modicon M262 Logic/Motion controller architectures.
- > The architectures comprises a PacDrive LMC motion controller or a Modicon M262 Motion controller (Sercos bus masters) and Modicon TM5CSLC safety logic controller (Sercos slave interface).
- > Modicon TM5CSLC safety logic controller manages the safety-related application over the Sercos network.
- > Input/outputs are connected to Sercos network with the use of Modicon TM5 Sercos interface module.
- > Programming: Each hardware component is defined within EcoStruxure Machine Expert environment such as the controller, Modicon TM5 (1) and Modicon TM7 (2) safety I/O modules, Lexium 62 safety servo drives (3), and Lexium 62 ILM integrated drives with optional safety module (4). The application program and configuration of the safety hardware is managed within the EcoStruxure Machine Expert - Safety editor.

(1) Please refer to catalog Ref [DIA3ED2131204EN](#)

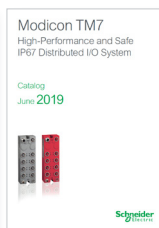
(2) Please refer to catalog Ref [DIA3ED2140405EN](#)

(3) Please refer to catalog Ref [DIA7ED2160305EN](#)

(4) Please refer to catalog Ref [DIA7ED2160306EN](#)



[DIA3ED2131204EN](#)



[DIA3ED2140405EN](#)



[DIA7ED2160305EN](#)



[DIA7ED2160306EN](#)

EcoStruxure Machine Expert

A single software environment to automate machines

Reference					
Software installation					
Description		References			
Digital installation		Downloadable from our website			
Physical installation with USB drive		ESEMACS11			
Software license (1)					
Designation	Supported controllers	Reference /number (Type)			
		STANDARD licenses		PROFESSIONAL licenses	
		Printed license	Digital license	Printed license	Digital license
EcoStruxure Machine Expert software V1.1	<ul style="list-style-type: none"> ■ PacDrive 3 LMC Eco, LMC Pro and LMC Pro2 motion controllers ■ Modicon M241 and Modicon M251 logic controllers ■ Modicon M262 Logic/Motion controller ■ Magelis SCU HMI controller 	ESEEXPCZZSPMZZ	ESEEXPCZZSPAZZ	ESECAPCZZSPMZZ	ESECAPCZZSPAZZ
		/1 (Single)	/1 (Single)	/1 (Single)	/1 (Single)
		ESEEXPCZZTPMZZ	ESEEXPCZZTPAZZ	ESECAPCZZTPMZZ	ESECAPCZZTPAZZ
		/10 (Team)	/10 (Team)	/10 (Team)	/10 (Team)
-	-	ESECAPCZZEPMZZ	ESECAPCZZEPAZZ		
-	-	/100 (Site)	/100 (Site)		
-	-	ESECAPCZZEPTZZ	ESECAPCZZEPBZZ		
-	-	/100 (Floating License)	/100 (Floating License)		
Software addons (1)					
SQL gateway license					
To activate the standalone "SQL Gateway" tool – Independent from any STANDARD or PROFESSIONAL license					
The machine can access a database remotely and read or write data with SQL syntax: the controller configured with EcoStruxure Machine Expert has an integrated SQL Client for connecting to one or more databases via the SQL gateway.					
The SQL gateway runs on Microsoft Windows and is available in 9 languages: English, French, German, Italian, Japanese, Portuguese, Simplified Chinese, Spanish, and Turkish. It includes 42 days trial.					
Designation		Reference /number (Type)			
		Printed license	Digital license		
License for a single SQL gateway		SOMSQLCZZSPMZZ	SOMSQLCZZSPAZZ		
To connect one or more controllers to one or more databases		/1 (Single)	/1 (Single)		
SVN Client license for STANDARD license owners					
Included in EcoStruxure Machine Expert PROFESSIONAL license					
SVN acts as a control system for tracking changes to files, folders and directories. It is used to assist in recovering data and recording the history of changes made over time.					
In addition to detailed recordings of changes and metadata for files and folders, Subversion's features include:					
<ul style="list-style-type: none"> - Easy implementation of new network functions - Consistent storage and handling of text and binary files - Efficient creation of branches and tags - Easy use with programming languages 					
Designation		Reference /number (Type)			
		Printed license	Digital license		
License to enable SVN integration tool		ESESVNCZZTPMZZ	ESESVNCZZTPAZZ		
For EcoStruxure Machine Expert STANDARD license owners		/10 (Team)	/10 (Team)		
Machine Advisor Code Analysis addon					
For STANDARD or PROFESSIONAL license owners					
Machine builders can track and improve the quality of their applications over their lifetime and avoid regression or deviation using Machine Advisor Code Analysis. It provides software and cloud tools to analyze, understand and improve machine application code thanks to:					
<ul style="list-style-type: none"> - Graphical representation of the "code DNA" - Visualize code complexity and metrics - Check and avoid coding rules violations 					
The frame work is integrated inside EcoStruxure Machine Expert and the analysis results are processed and stored on the cloud . The programmer can improve his application and also share the results to his team members.					
Designation		Reference /number (Type)			
		Printed license	Digital license		
Machine Advisor Code Analysis addon license		ESEMCAZZEXMZZ	ESEMCAZZEXAZZ		
For EcoStruxure Machine Expert STANDARD or PROFESSIONAL license owners.		/100 (Entity)	/100 (Entity)		
With this one year validity addon license, users can:					
<ul style="list-style-type: none"> - Upload, analyze and monitor the results of one project inside the cloud portal - Multiple users can access the cloud portal and their company projects - Use all code analysis features (unlimited Convention tables, Dependency view and Metrics table) inside EcoStruxure Machine Expert desktop software for up to 100 computers 					

(1) Commercial licenses are available in two formats:

- Printed license: delivered by regular mail with ID authorization.
- Digital license: delivered by e-mail after registering with Schneider Electric Customer Care Center.

Reference

Software addons (continued) (1)

ETEST full license for STANDARD license

Included in EcoStruxure Machine Expert **PROFESSIONAL** license

EcoStruxure Machine Expert integrates ETEST, a powerful innovative tool for improving the IEC program quality of your projects and helping to avoid potential setbacks throughout the life cycle of the machine.

The ETEST tool is used to program unit tests simply within a EcoStruxure Machine Expert project and to enhance the robustness of the application program. In the **STANDARD** license, ETEST framework is available but users are limited to program a maximum number of 5 test cases objects.

The ETEST full license addon allows **STANDARD** license owners to program unlimited number of ETEST test cases.

The **PROFESSIONAL** license owners can program unlimited number of ETEST test cases objects.

Designation	Reference /number (Type)	
	Printed license	Digital license
License to enable the full ETEST features For EcoStruxure Machine Expert STANDARD license owners	ESEETTCZZTPMZZ /10 (Team)	ESEETTCZZTPAZZ /10 (Team)

Software license to program TM5CSLC●00FS safety logic controller

Additional to EcoStruxure Machine Expert **STANDARD** or **PROFESSIONAL** licenses

Designation	Enable device	Reference /number (Type)	
		Printed license	Digital license
EcoStruxure Machine Expert – Safety Creates complex logical conditions using logical functions and safety functions, such as muting, timer, counters, Emergency stop, light curtain etc. via a graphic configuration interface. Can be installed from the Machine Installer.	Modicon TM5CSLC●00FS safety logic controller	ESES AACZZSPMZZ /1 (Single)	ESES AACZZSPA ZZ /1 (Single)
		ESES AACZZTPMZZ /10 (Team)	ESES AACZZTPA ZZ /10 (Team)
		ESES AACZZEPMZZ /100 (Entity)	ESES AACZZEPA ZZ /100 (Entity)
		ESES AACZZEPNZZ /100(Floating License)	ESES AACZZEPB ZZ /100 (Floating License)
AS-Interface Safety Gateway Networking solution for connecting simple field I/O devices in discrete manufacturing and process applications using a single 2-conductor cable. AS-Interface Gateway gathers data from the AS-Interface network.	Modicon TM5CSLC●00FS safety logic controller	ESES ADCZZSPMZZ /1 (Single)	ESES ADCZZSPA ZZ /1 (Single)
		ESES ADCZZTPMZZ /10 (Team)	ESES ADCZZTPA ZZ /10 (Team)
		ESES ADCZZEPMZZ /100 (Entity)	ESES ADCZZEPA ZZ /100 (Entity)
		ESES ADCZZEPNZZ /100 (Floating License)	ESES ADCZZEPB ZZ /100 (Floating License)
ASi License-SoSafe Programmable V2.2SP1	Modicon TM5CSLC●00FS safety logic controller	SOMS ADCZZSPMZZ /1 (Single)	SOMS ADCZZSPA ZZ /1 (Single)
		SOMS ADCZZTPMZZ /10 (Team)	SOMS ADCZZTPA ZZ /10 (Team)
		SOMS ADCZZEPMZZ /100 (Entity)	SOMS ADCZZEPA ZZ /100 (Entity)

Software update licenses (1)

Update licenses for SoMachine Motion license owners

Designation	Reference /number (Type)	
	Printed license	Digital license
Update licenses For SoMachine Motion V4 users to EcoStruxure Machine Expert PROFESSIONAL license.	ESEC MUCZZSPMZZ /1 (Single)	ESEC MUCZZSPA ZZ /1 (Single)
	ESEC MUCZZTPMZZ /10 (Team)	ESEC MUCZZTPA ZZ /10 (Team)
	ESEC MUCZZEPMZZ /100 (Entity)	ESEC MUCZZEPA ZZ /100 (Entity)

(1) Commercial licenses are available in two formats:

- Printed license: delivered by regular mail with ID authorization.
- Digital license: delivered by e-mail after registering with Schneider Electric Customer Care Center.

E	
ESECAPCZZEPAZZ	16
ESECAPCZZEPBZZ	16
ESECAPCZZEPMZZ	16
ESECAPCZZEPTZZ	16
ESECAPCZZSPAZZ	16
ESECAPCZZSPMZZ	16
ESECAPCZZTPAZZ	16
ESECAPCZZTPMZZ	16
ESECMUCZZEPAZZ	17
ESECMUCZZEPMZZ	17
ESECMUCZZSPAZZ	17
ESECMUCZZSPMZZ	17
ESECMUCZZTPAZZ	17
ESECMUCZZTPMZZ	17
ESEETTCZZTPAZZ	17
ESEETTCZZTPMZZ	17
ESEEXPCZZSPAZZ	16
ESEEXPCZZSPMZZ	16
ESEEXPCZZTPAZZ	16
ESEEXPCZZTPMZZ	16
ESEMACS11	16
ESEMCAACZZEXAZZ	16
ESEMCAACZZEXMZZ	16
EESAAACZZEPAZZ	17
EESAAACZZEPBZZ	17
EESAAACZZEPMZZ	17
EESAAACZZEPNZZ	17
EESAAACZZSPAZZ	17
EESAAACZZSPMZZ	17
EESAAACZZTPAZZ	17
EESAAACZZTPMZZ	17
EESADCZZEPAZZ	17
EESADCZZEPBZZ	17
EESADCZZEPMZZ	17
EESADCZZEPNZZ	17
EESADCZZSPAZZ	17
EESADCZZSPMZZ	17
EESADCZZTPAZZ	17
EESADCZZTPMZZ	17
EESVNCZZTPAZZ	16
EESVNCZZTPMZZ	16

S	
SOMSADCZZEPAZZ	17
SOMSADCZZEPMZZ	17
SOMSADCZZSPAZZ	17
SOMSADCZZSPMZZ	17
SOMSADCZZTPAZZ	17
SOMSADCZZTPMZZ	17
SOMSQLCZZSPAZZ	16
SOMSQLCZZSPMZZ	16

Life Is On



Learn more about our products at
[schneider-electric.com](https://www.schneider-electric.com)

The information provided in this documentation contains general descriptions and/or technical characteristics of the performance of the products contained herein. This documentation is not intended as a substitute for and is not to be used for determining suitability or reliability of these products for specific user applications. It is the duty of any such user or integrator to perform the appropriate and complete risk analysis, evaluation and testing of the products with respect to the relevant specific application or use thereof. Neither Schneider Electric nor any of its affiliates or subsidiaries shall be responsible or liable for misuse of the information contained herein.

Design: Schneider Electric
Photos: Schneider Electric

Schneider Electric Industries SAS

Head Office
35, rue Joseph Monier - CS 30323
F-92500 Rueil-Malmaison Cedex
France

DIA3ED2180701EN
June 2019 - V1.1