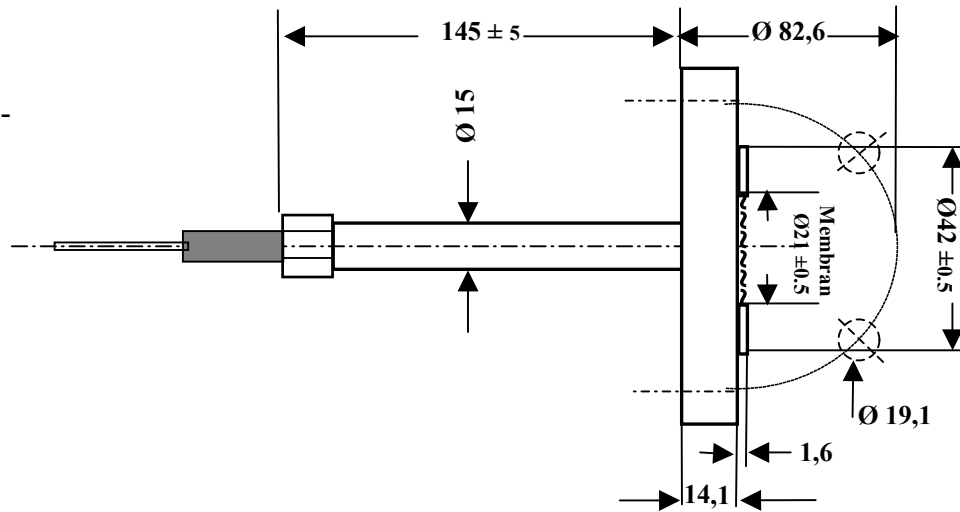
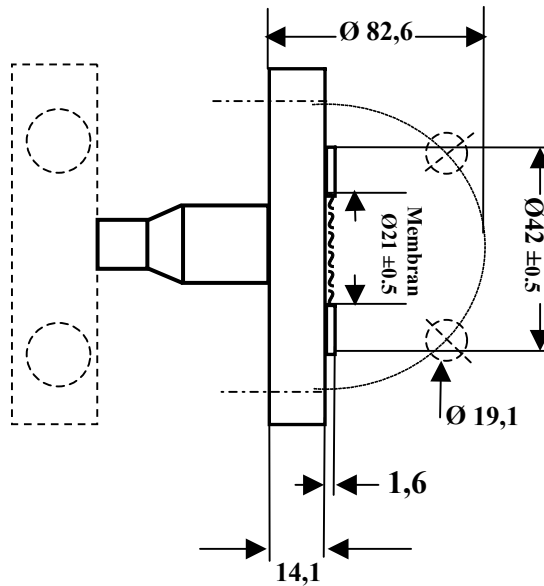
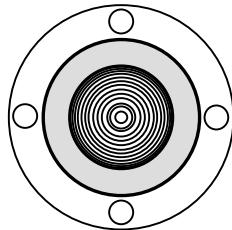


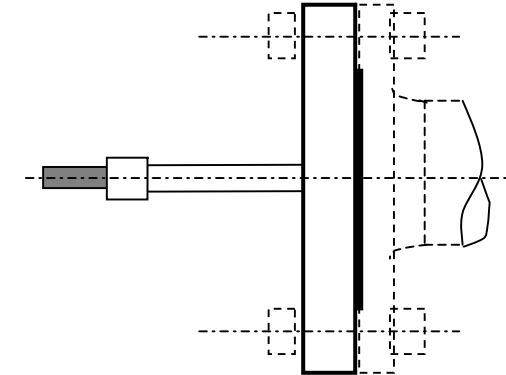
Kapillaranbau
Fühlertyp 20-B2-



Direktanbau
Fühlertyp 50-B2-



Fühler Montage



Fühlertyp: 20- od. 50-B2- _ _
Flansch ANSI RF, 1.4571, für
Direktanbau (50) oder Kapillaranbau (20)

Membrane/Dichtleiste – Werkstoffe:
1.4571; 1.4435, 1.4404; Hast.C 276,
HC4, HB2, Tantal, Monel, Nickel

Beschichtungen: PTFE, Gold

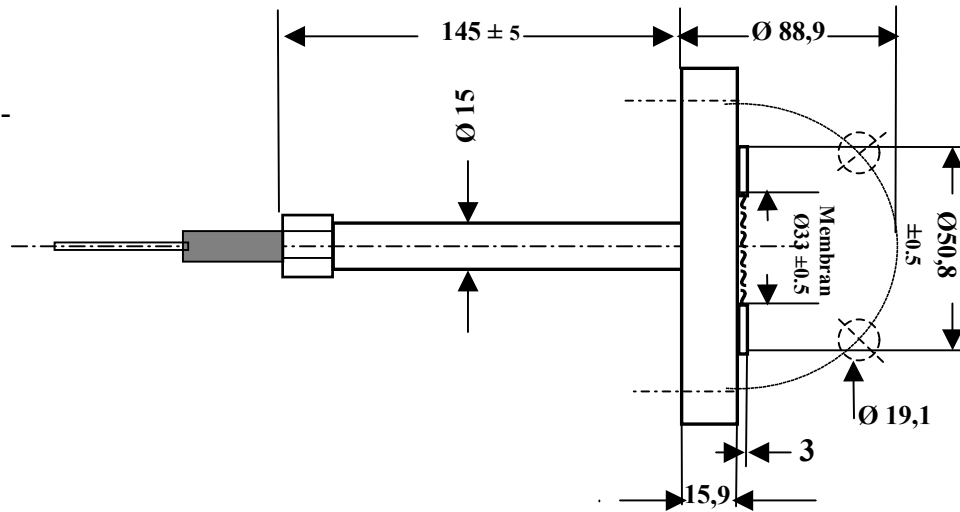
Dichtflächen:
ANSI RF, RTJ, LT, ST, LM, LG



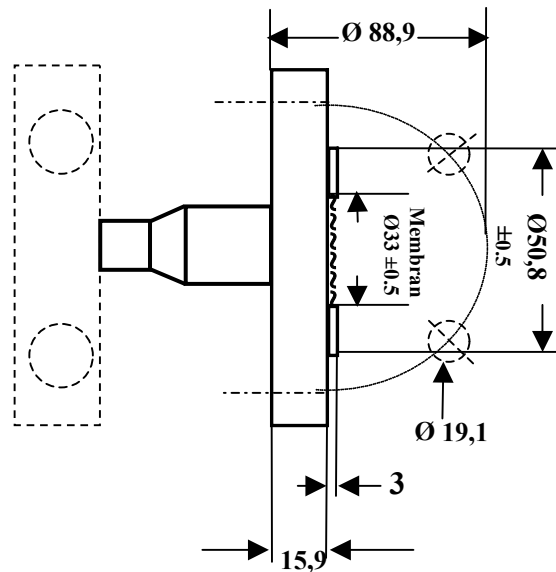
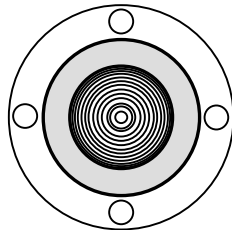
TRENNMEMBRAN-SYSTEM-TECHNIK GMBH

Flanschfühler 3/4" 300 lbs, ANSI, RF

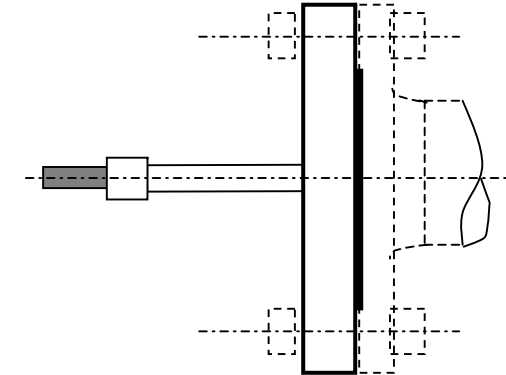
Kapillaranbau
Fühlertyp 21-B2-



Direktanbau
Fühlertyp 51-B2-



Fühler Montage



Fühlertyp: 21- od. 51-B2- _ _
Flansch ANSI RF, 1.4571, für
Direktanbau (51) oder Kapillaranbau (21)

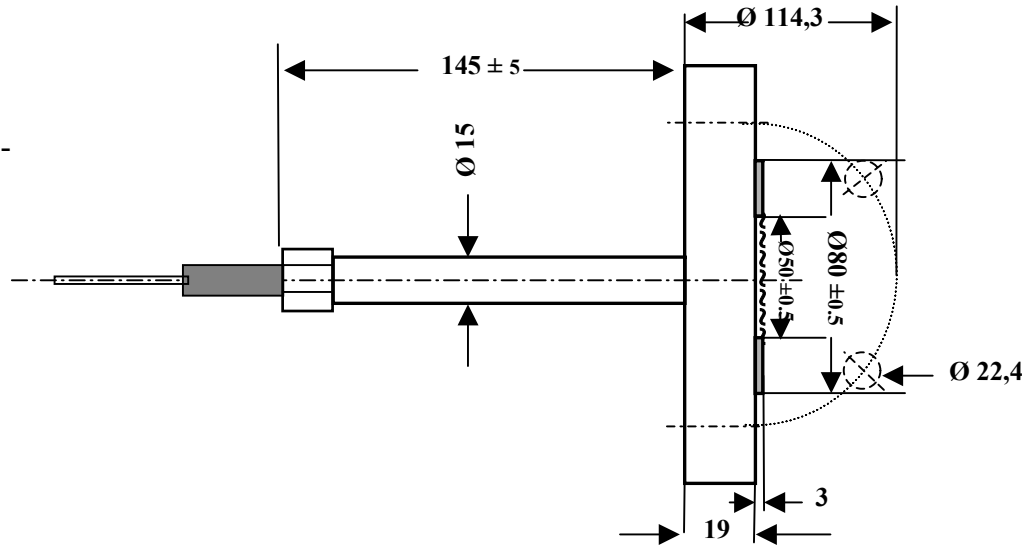
Membrane/Dichtleiste – Werkstoffe:
1.4571; 1.4435, 1.4404; Hast.C 276,
HC4, HB2, Tantal, Monel, Nickel

Beschichtungen: PTFE, Gold

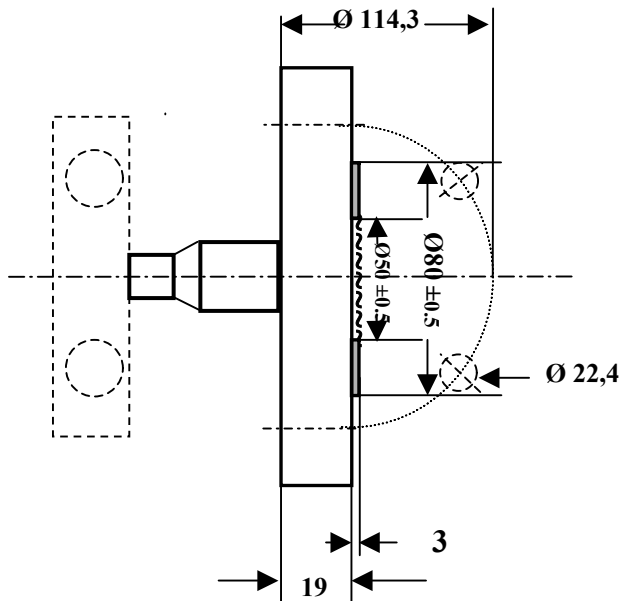
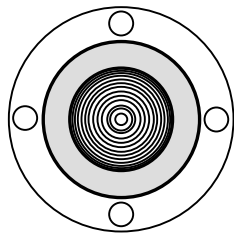
Dichtflächen:
ANSI RF, RTJ, LT, ST, LM, LG



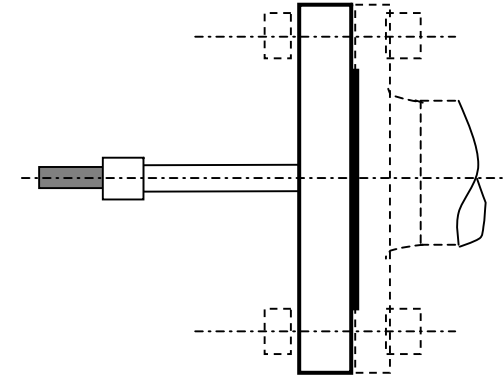
Kapillaranbau
Fühlertyp 22-B2-



Direktanbau
Fühlertyp 52-B2-



Fühler Montage



Fühlertyp: 22- od. 52-B2- _ _
Flansch ANSI RF, 1.4571, für
Direktanbau (52) oder Kapillaranbau (22)

Membrane/Dichtleiste – Werkstoffe:
1.4571; 1.4435, 1.4404; Hast.C 276,
HC4, HB2, Tantal, Monel, Nickel

Beschichtungen: PTFE, Gold

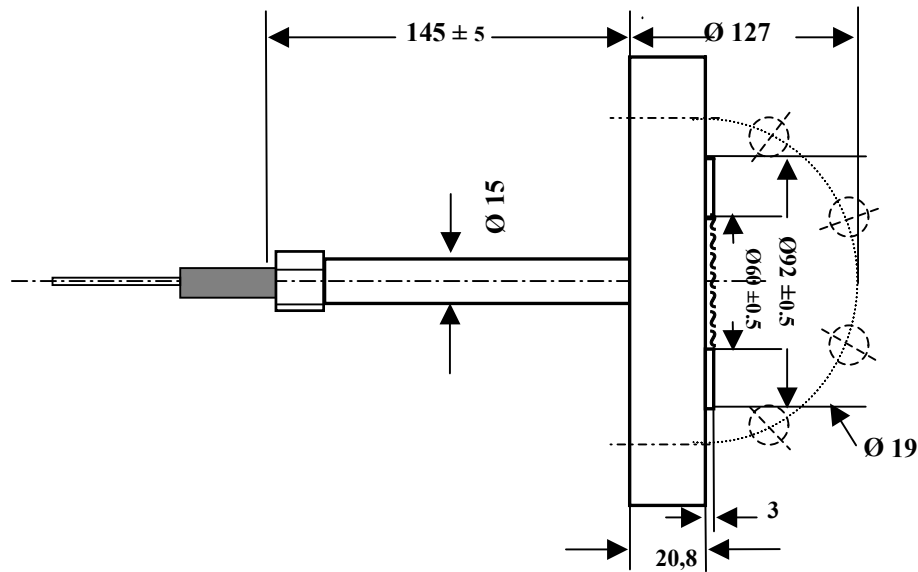
Dichtflächen:
ANSI RF, RTJ, LT, ST, LM, LG

T-S-T

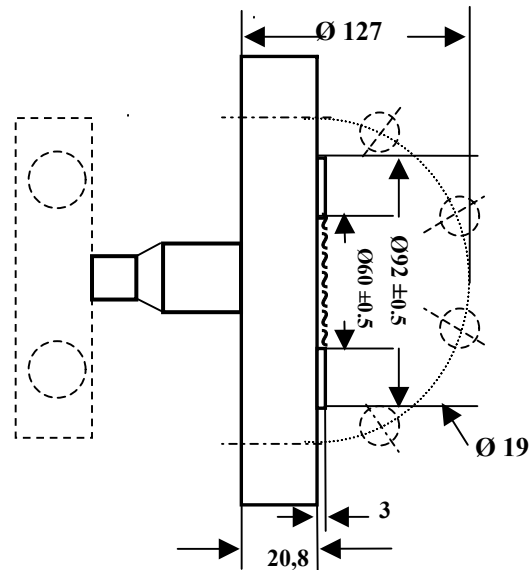
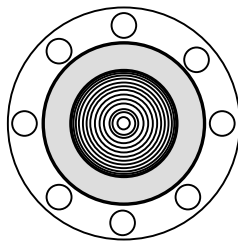
TRENNMEMBRAN-SYSTEM-TECHNIK GMBH

Flanschfühler 1 1/2" 300 lbs, ANSI, RF

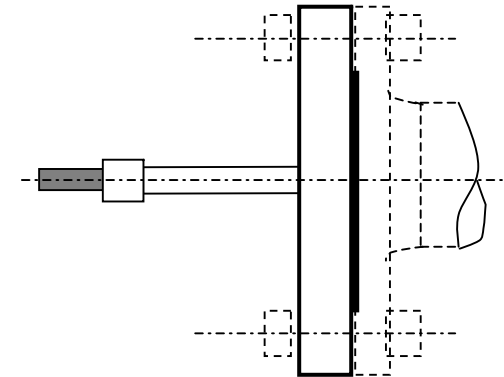
Kapillaranbau
Fühlertyp 23-B2-



Direktanbau
Fühlertyp 53-B2-



Fühler Montage



Fühlertyp: 23- od. 53-B2- _ _
Flansch ANSI RF, 1.4571, für
Direktanbau (53) oder Kapillaranbau (23)

Membrane/Dichtleiste – Werkstoffe:
1.4571; 1.4435, 1.4404; Hast.C 276,
HC4, HB2, Tantal, Monel, Nickel

Beschichtungen: PTFE, Gold

Dichtflächen:
ANSI RF, RTJ, LT, ST, LM, LG

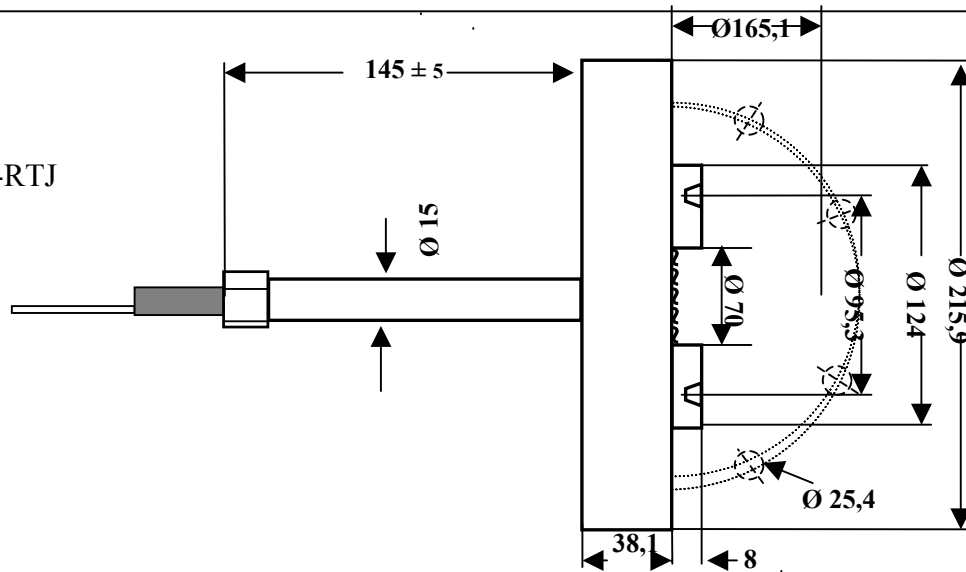
T-S-T

TRENNMEMBRAN-SYSTEM-TECHNIK GMBH

Flanschfühler 2" 300 lbs, ANSI, RF

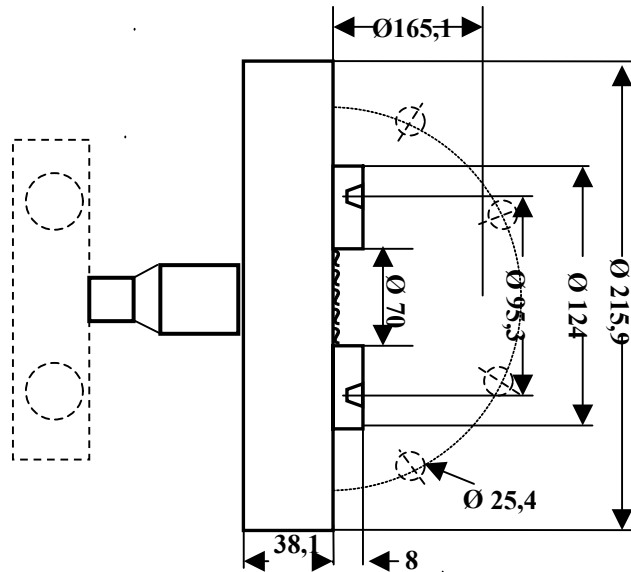
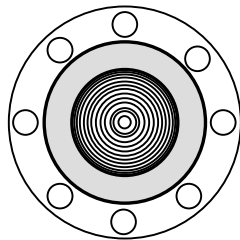
Kapillaranbau

Fühlertyp 23-B6-_-_-RTJ

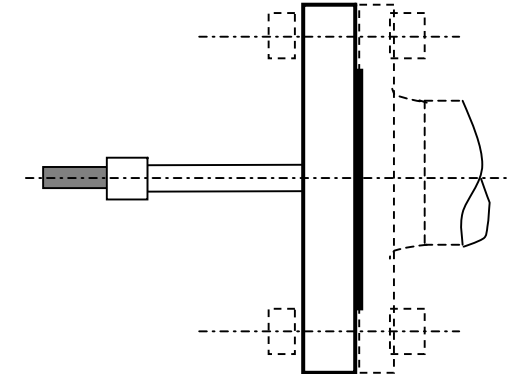


Direktanbau

Fühlertyp 53-B6-_-_-RTJ



Fühler Montage



Fühlertyp:

23- od. 53-B6-_-_-RTJ

Flansch ANSI RTJ, 1.4571, für
Direktanbau (53) oder Kapillaranbau (23)

Membrane/Dichtleiste – Werkstoffe:

1.4571; 1.4435, 1.4404; Hast.C 276,
HC4, HB2, Tantal, Monel, Nickel

Beschichtungen: PTFE, Gold

Dichtflächen:

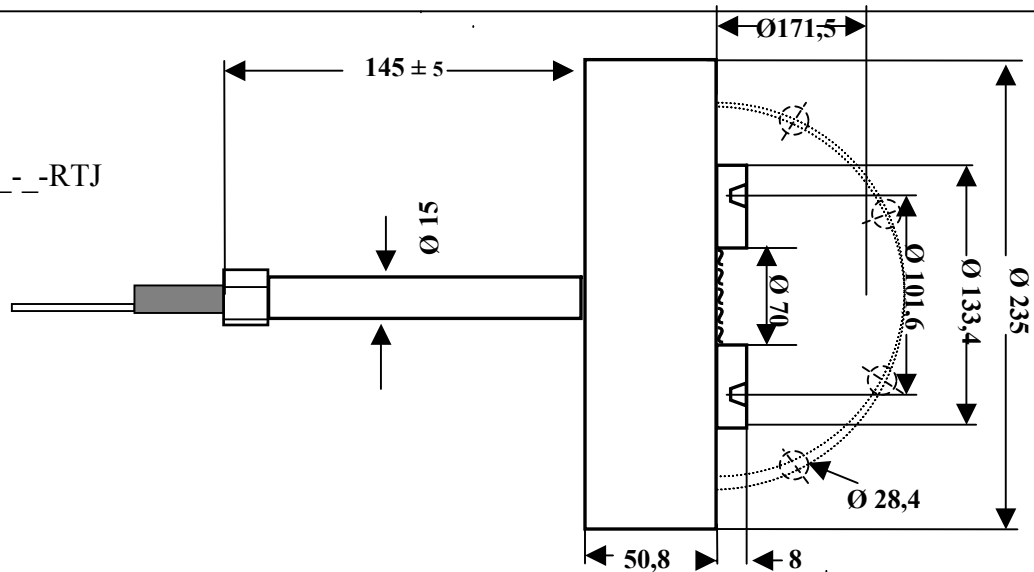
ANSI RF, RTJ, LT, ST, LM, LG

T-S-T

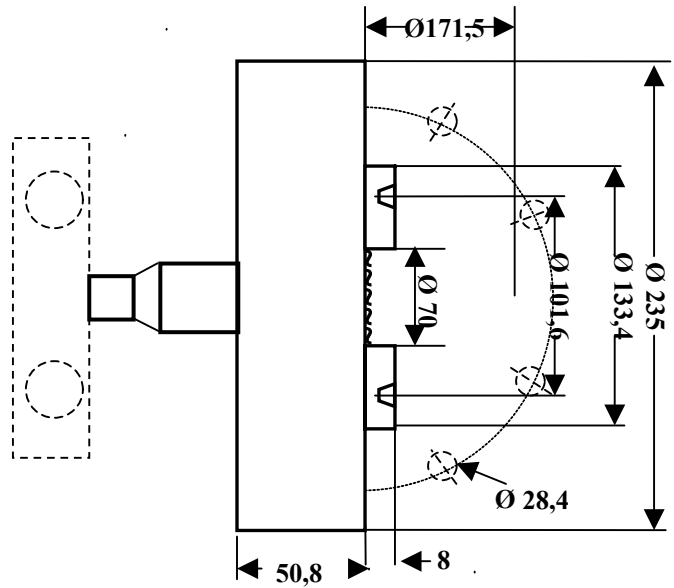
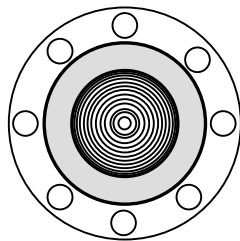
TRENNMEMBRAN-SYSTEM-TECHNIK GMBH

Flanschfühler 2" 1500 lbs, ANSI, RTJ

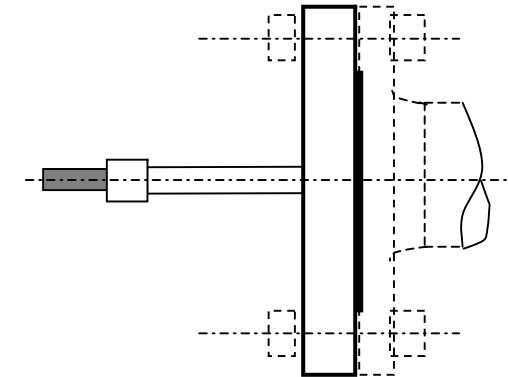
Kapillaranbau
Fühlertyp 23-B7-_-_-RTJ



Direktanbau
Fühlertyp 53-B7-_-_-RTJ



Fühler Montage



Fühlertyp:
23- od. 53-B7-_-_-RTJ

Flansch ANSI RTJ, 1.4571, für
Direktanbau (53) oder Kapillaranbau (23)

Membrane/Dichtleiste – Werkstoffe:
1.4571; 1.4435, 1.4404; Hast.C 276,
HC4, HB2, Tantal, Monel, Nickel

Beschichtungen: PTFE, Gold

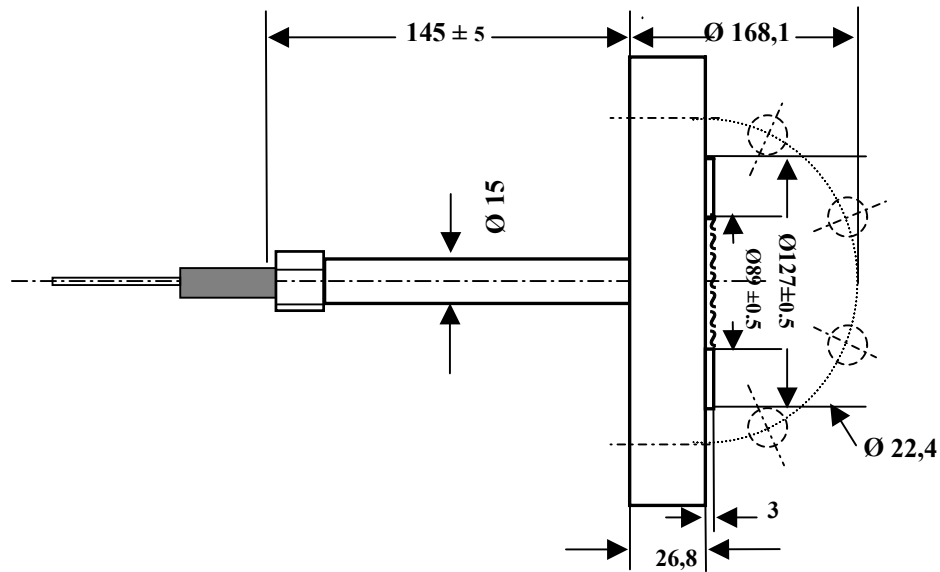
Dichtflächen:
ANSI RF, RTJ, LT, ST, LM, LG

T-S-T

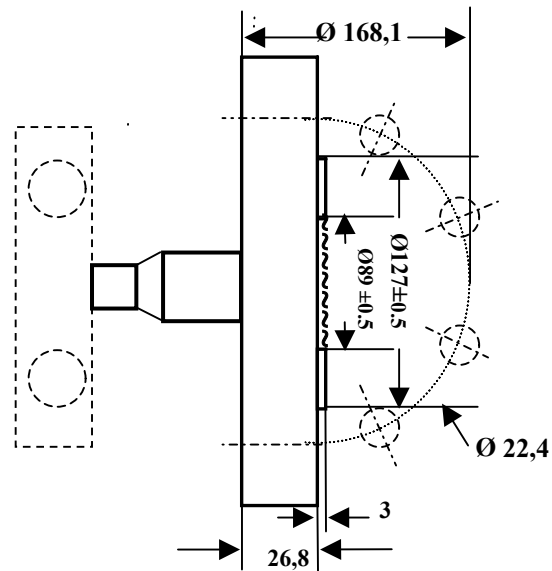
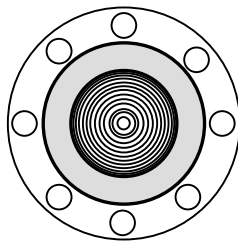
TRENNMEMBRAN-SYSTEM-TECHNIK GMBH

Flanschfühler 2" 2500 lbs, ANSI, RTJ

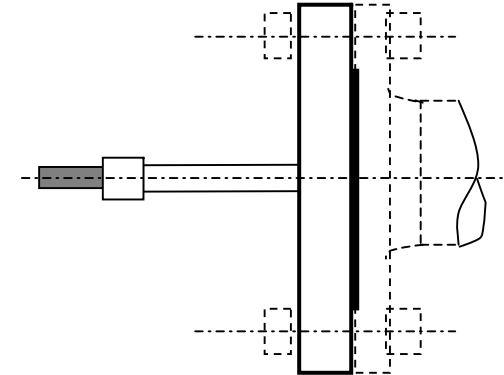
Kapillaranbau
Fühlertyp 24-B2-



Direktanbau
Fühlertyp 54-B2-



Fühler Montage



Fühlertyp: 24- od. 54-B2- _ _
Flansch ANSI RF, 1.4571, für
Direktanbau (54) oder Kapillaranbau (24)

Membrane/Dichtleiste – Werkstoffe:
1.4571; 1.4435, 1.4404; Hast.C 276,
HC4, HB2, Tantal, Monel, Nickel

Beschichtungen: PTFE, Gold

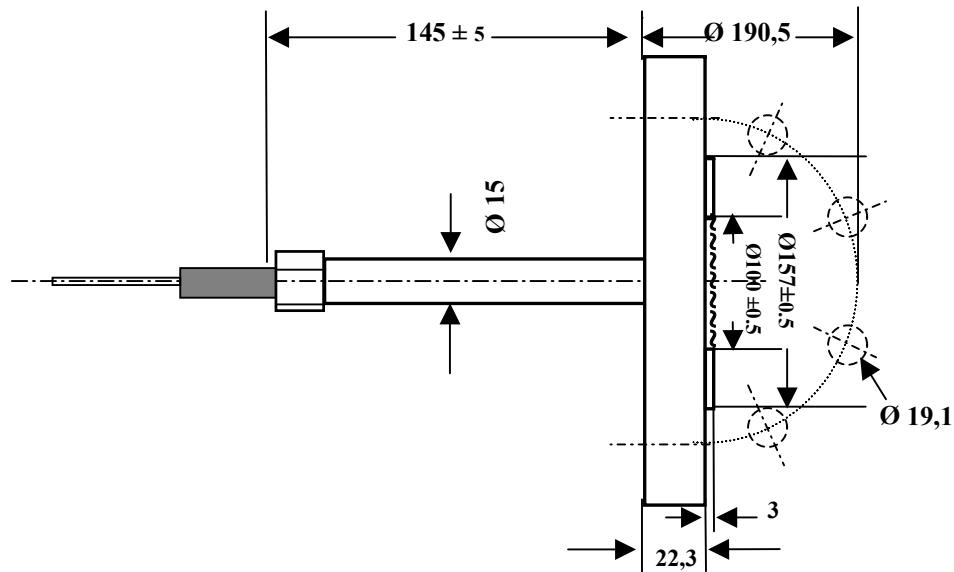
Dichtflächen:
ANSI RF, RTJ, LT, ST, LM, LG

T-S-T

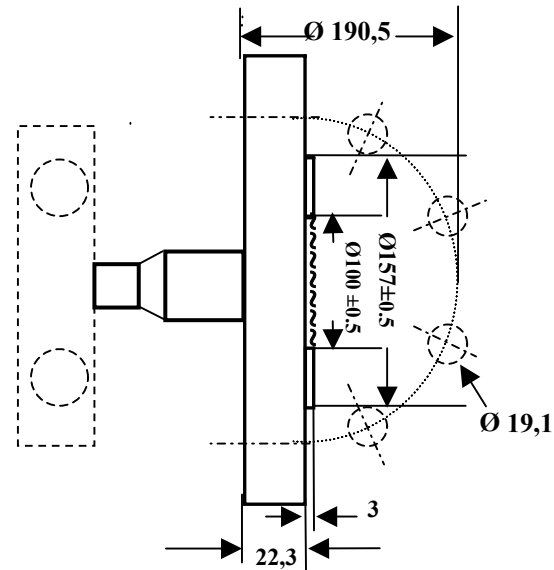
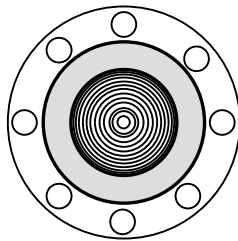
TRENNMEMBRAN-SYSTEM-TECHNIK GMBH

Flanschfühler 3" 300 lbs, ANSI, RF

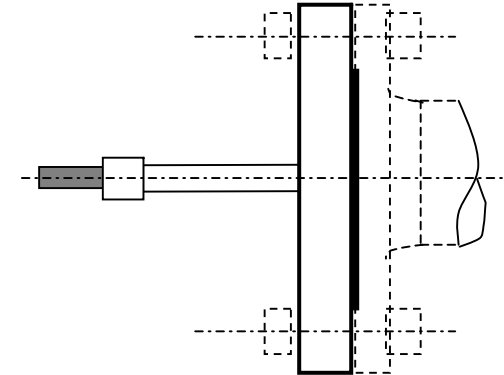
Kapillaranbau
Fühlertyp 25-B1-



Direktanbau
Fühlertyp 55-B1-



Fühler Montage



Fühlertyp: 25- od. 55-B1- _ _
Flansch ANSI RF, 1.4571, für
Direktanbau (55) oder Kapillaranbau (25)

Membrane/Dichtleiste – Werkstoffe:
1.4571; 1.4435, 1.4404; Hast.C 276,
HC4, HB2, Tantal, Monel, Nickel

Beschichtungen: PTFE, Gold

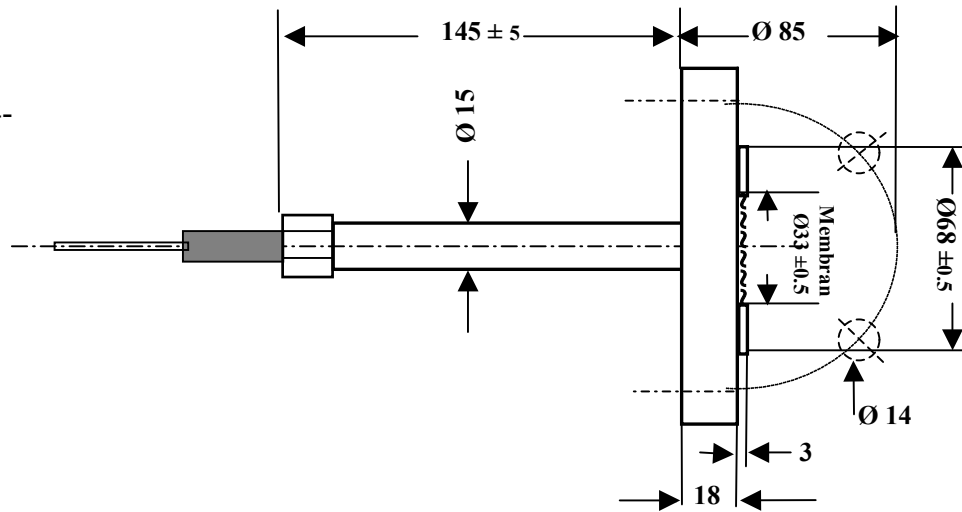
Dichtflächen:
ANSI RF, RTJ, LT, ST, LM, LG

T-S-T

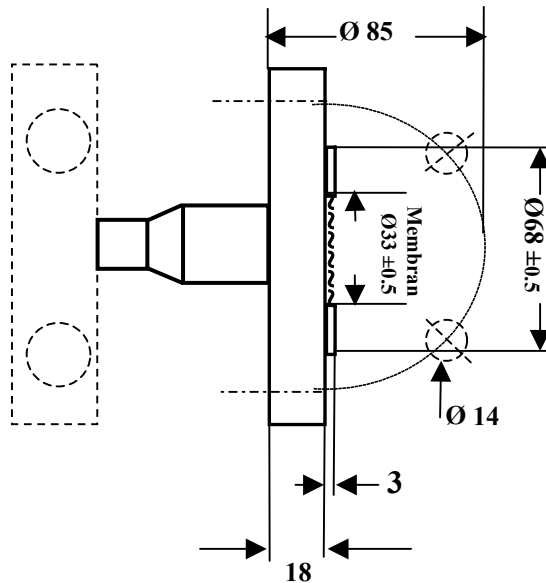
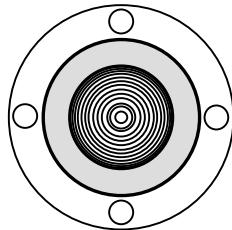
TRENNMEMBRAN-SYSTEM-TECHNIK GMBH

Flanschfühler 4" 150 lbs, ANSI, RF

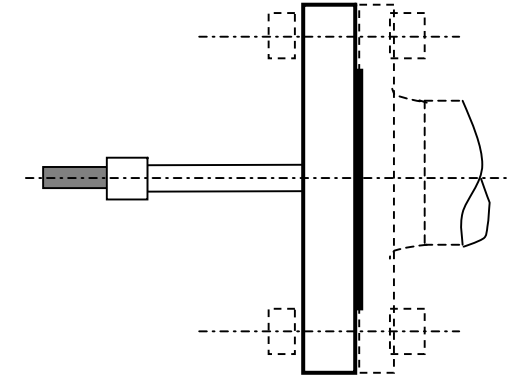
Kapillaranbau
Fühlertyp 21-A4-



Direktanbau
Fühlertyp 51-A4-



Fühler Montage



Fühlertyp: 21- od. 51-A4- _ _

Flansch DIN EN 1092-1, Form B1, 1.4571, für Direktanbau (51) oder Kapillaranbau (21)

Membrane/Dichtleiste – Werkstoffe:

1.4571; 1.4435, 1.4404; Hast.C 276, HC4, HB2, Tantal, Monel, Nickel

Beschichtungen: PTFE, Gold

Dichtflächen:

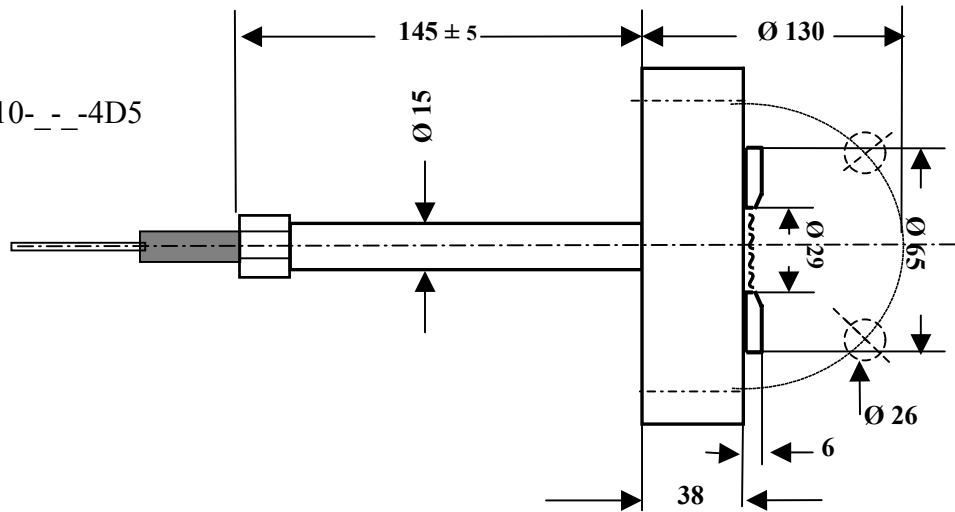
DIN Form C, D, N(Nut), F (Feder), L (Linse)



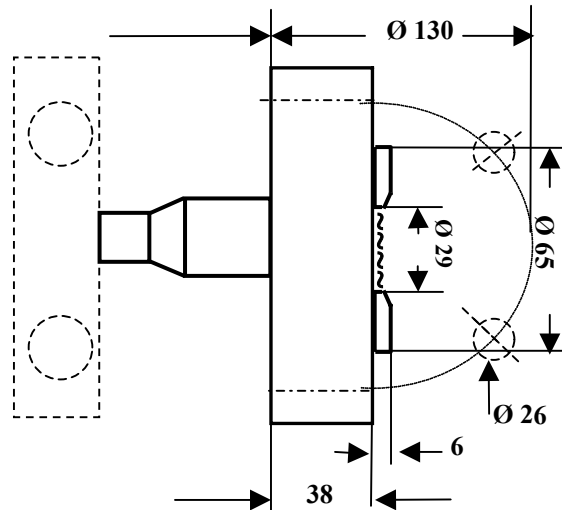
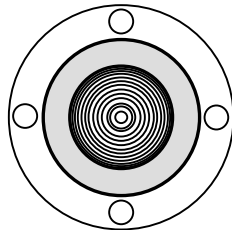
TRENNMEMBRAN-SYSTEM-TECHNIK GMBH

Flanschfühler DN25 PN40

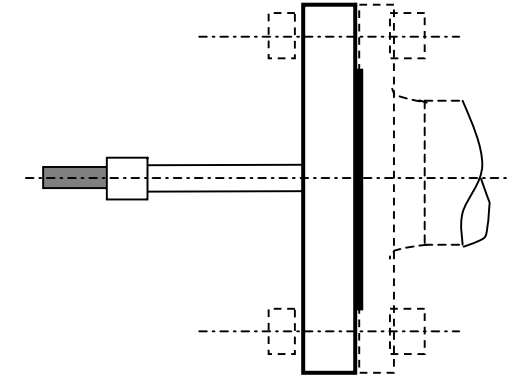
Kapillaranbau
Fühlertyp 21-A10-__-4D5



Direktanbau
Fühlertyp 51-A4-__-4D5



Fühler Montage



Fühlertyp:

21- od. 51-A10-__-4D5

Flansch DIN 2527 Form L, 1.4571, für Direktanbau (51) oder Kapillaranbau (21)

Membrane/Dichtleiste – Werkstoffe:

1.4571; 1.4435, 1.4404; Hast.C 276, HC4, HB2, Tantal, Monel, Nickel

Beschichtungen: PTFE, Gold

Dichtflächen:

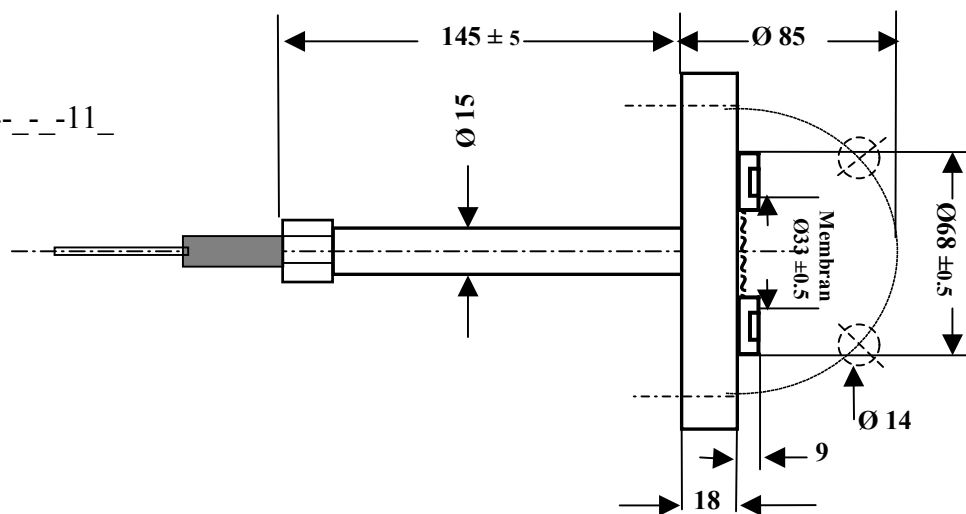
DIN Form C, D, N(Nut), F (Feder), L (Linse)

T-S-T

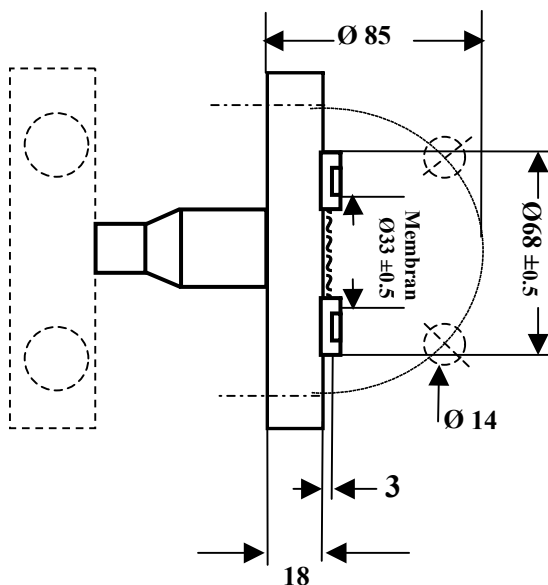
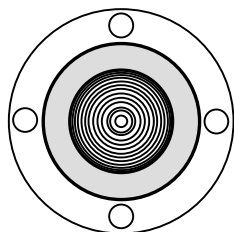
TRENNMEMBRAN-SYSTEM-TECHNIK GMBH

Flanschfühler DN25 PN400, Form L

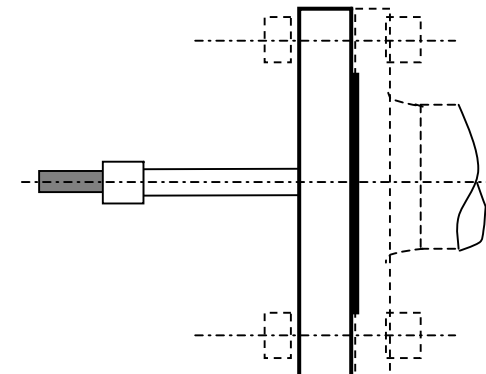
Kapillaranbau
Fühlertyp 21-A4-_-_-11_



Direktanbau
Fühlertyp 51-A4-_-_-11_



Fühler Montage



Fühlertyp:
21- od. 51-A4-_-_-11_

Flansch DIN EN 1092-1, Form D, 1.4571, für Direktanbau (51) oder Kapillaranbau (21)

Membrane/Dichtleiste – Werkstoffe:
1.4571; 1.4435, 1.4404; Hast.C 276, HC4, HB2, Tantal, Monel, Nickel

Beschichtungen: PTFE, Gold

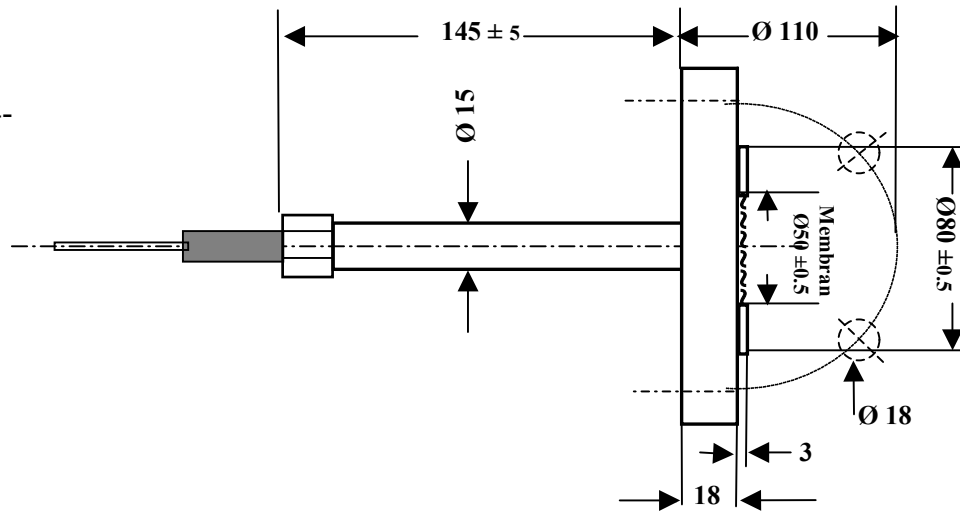
Dichtflächen:
DIN Form C, D, N(Nut), F (Feder), L (Linse)

T-S-T

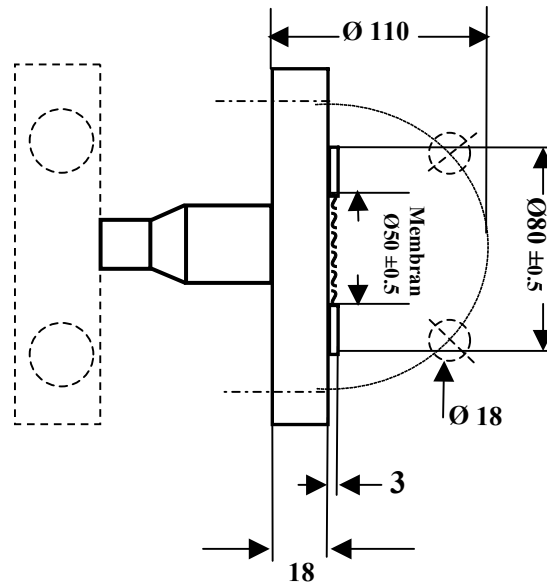
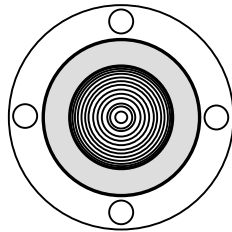
TRENNMEMBRAN-SYSTEM-TECHNIK GMBH

Flanschfühler DN25 PN40, Form Nut

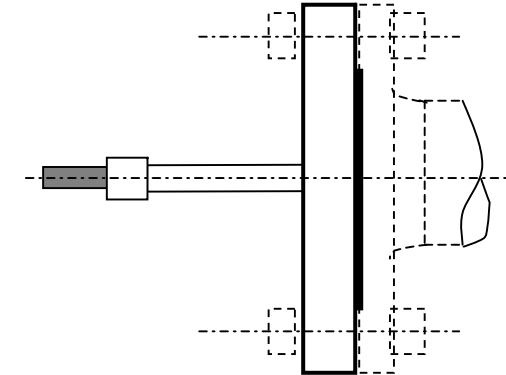
Kapillaranbau
Fühlertyp 22-A4-



Direktanbau
Fühlertyp 52-A4-



Fühler Montage



Fühlertyp: 22- od. 52-A4- _ _

Flansch DIN EN 1092-1, Form B1, 1.4571, für Direktanbau (52) oder Kapillaranbau (22)

Membrane/Dichtleiste – Werkstoffe:

1.4571; 1.4435, 1.4404; Hast.C 276, HC4, HB2, Tantal, Monel, Nickel

Beschichtungen: PTFE, Gold

Dichtflächen:

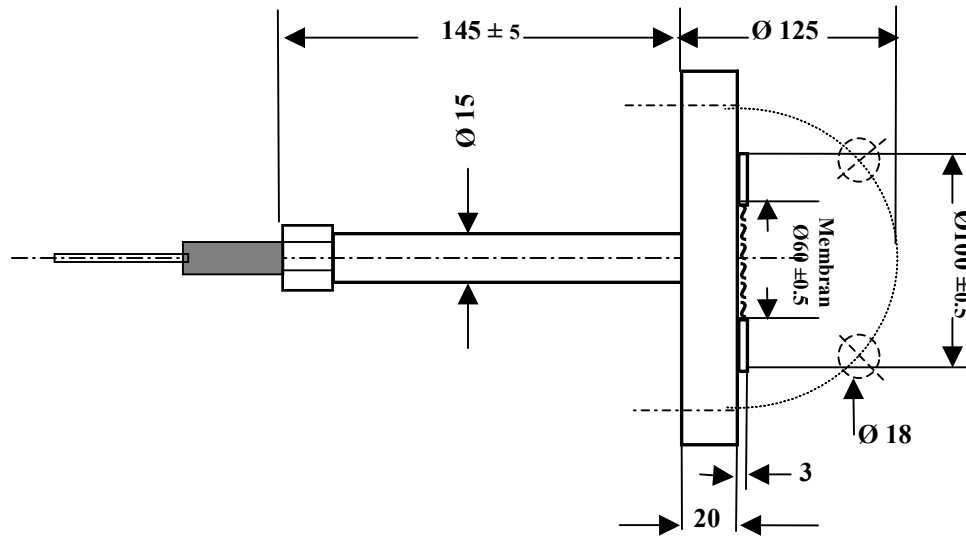
DIN Form C, D, N(Nut), F (Feder), L (Linse)

T-S-T

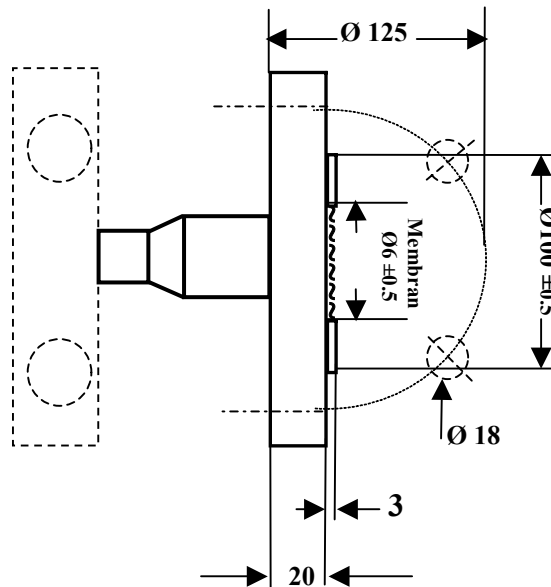
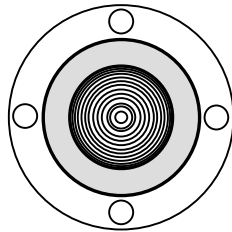
TRENNMEMBRAN-SYSTEM-TECHNIK GMBH

Flanschfühler DN40 PN40

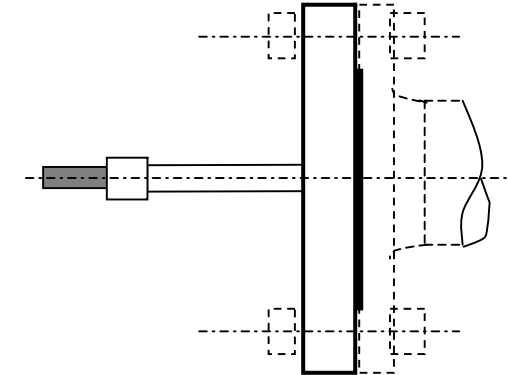
Kapillaranbau
Fühlertyp 23-A4-



Direktanbau
Fühlertyp 53-A4-



Fühler Montage



Fühlertyp: 23- od. 53-A4- _ _

Flansch DIN EN 1092-1, Form B1, 1.4571, für Direktanbau (53) oder Kapillaranbau (23)

Membrane/Dichtleiste – Werkstoffe:

1.4571; 1.4435, 1.4404; Hast.C 276, HC4, HB2, Tantal, Monel, Nickel

Beschichtungen: PTFE, Gold

Dichtflächen:

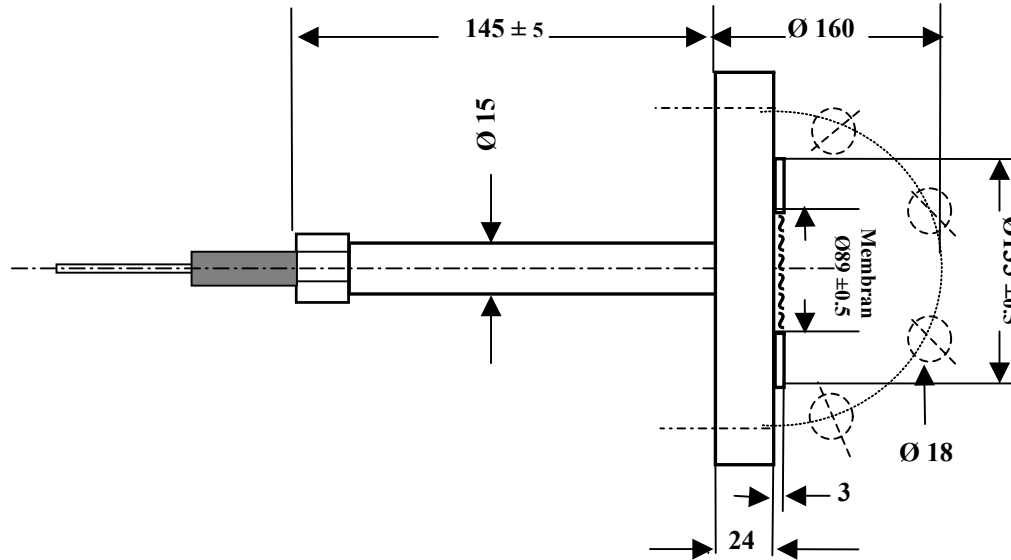
DIN Form C, D, N(Nut), F (Feder), L (Linse)

T-S-T

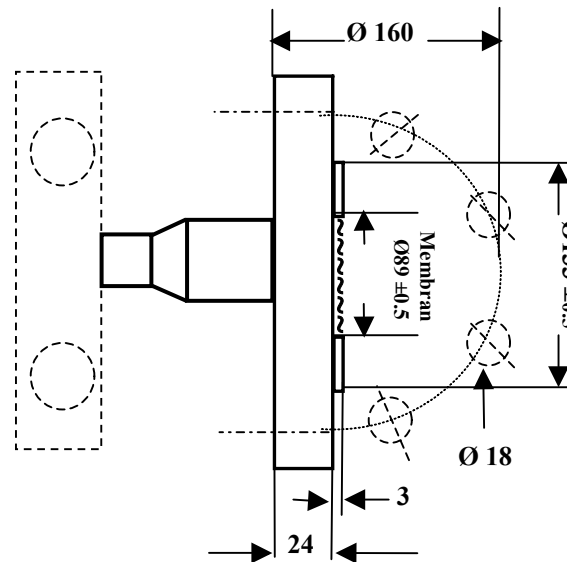
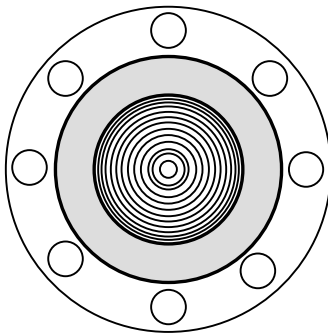
TRENNMEMBRAN-SYSTEM-TECHNIK GMBH

Flanschfühler DN50 PN40

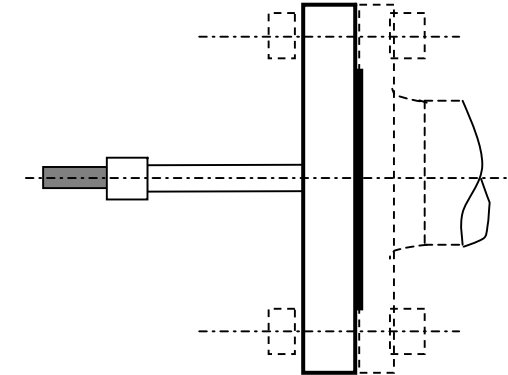
Kapillaranbau
Fühlertyp 24-A4-



Direktanbau
Fühlertyp 54-A4-



Fühler Montage



Fühlertyp: 24- od. 54-A4- _ _

Flansch DIN EN 1092-1, Form B1, 1.4571, für Direktanbau (53) oder Kapillaranbau (23)

Membrane/Dichtleiste – Werkstoffe:

1.4571; 1.4435, 1.4404; Hast.C 276, HC4, HB2, Tantal, Monel, Nickel

Beschichtungen: PTFE, Gold

Dichtflächen:

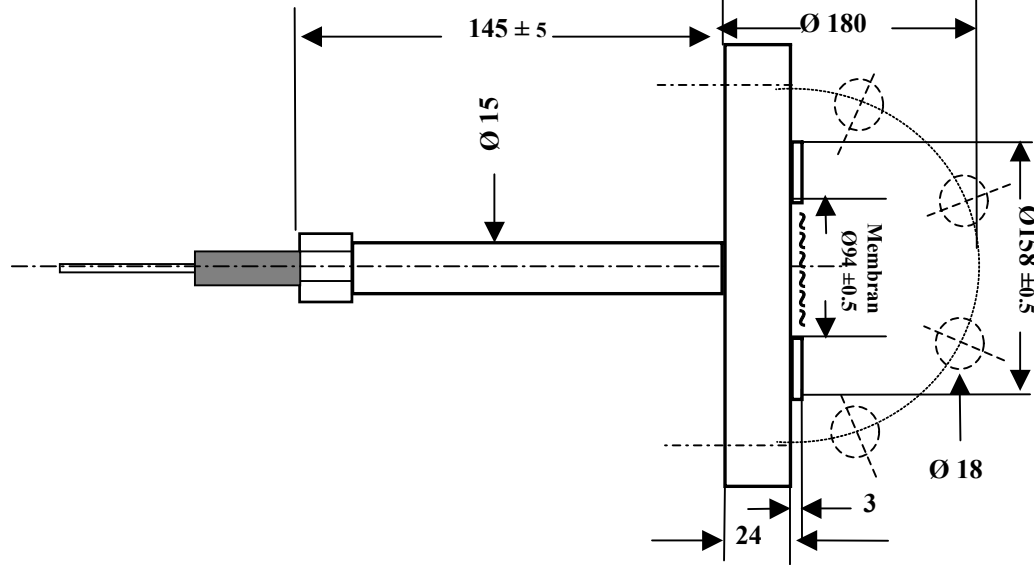
DIN Form C, D, N(Nut), F (Feder), L (Linse)



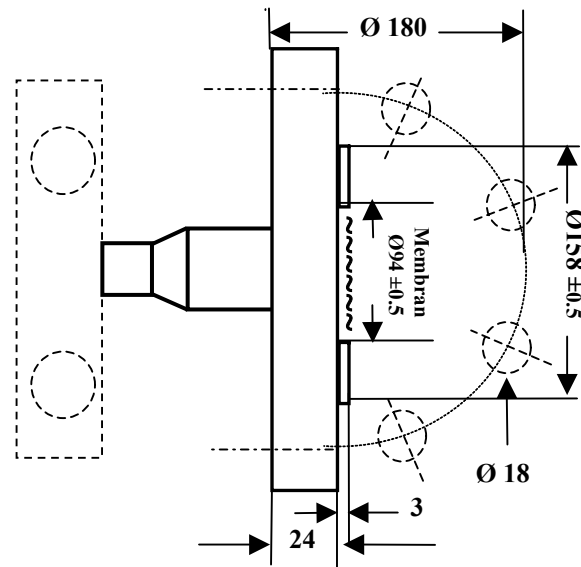
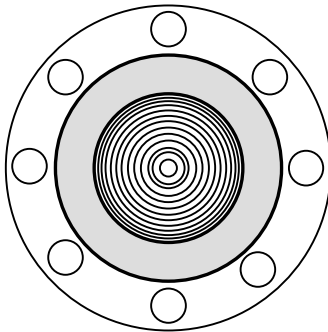
TRENNMEMBRAN-SYSTEM-TECHNIK GMBH

Flanschfühler DN80 PN40

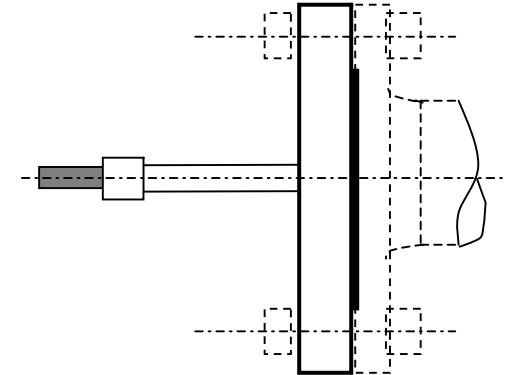
Kapillaranbau
Fühlertyp 25-A4-



Direktanbau
Fühlertyp 55-A4-



Fühler Montage



Fühlertyp: 25- od. 55-A4- _ _

Flansch DIN EN 1092-1, Form B1, 1.4571, für Direktanbau (53) oder Kapillaranbau (23)

Membrane/Dichtleiste – Werkstoffe:
1.4571; 1.4435, 1.4404; Hast.C 276, HC4, HB2, Tantal, Monel, Nickel

Beschichtungen: PTFE, Gold

Dichtflächen:

DIN Form C, D, N(Nut), F (Feder), L (Linse)

T-S-T

TRENNMEMBRAN-SYSTEM-TECHNIK GMBH

Flanschfühler DN100 PN40